

**TOURIST ACCOMMODATION, SOUTH AUSTRALIA,
DECEMBER QUARTER 1994**

MAIN FEATURES

DECEMBER QUARTER 1994
COMPARED WITH
DECEMBER QUARTER 1993

HOTELS, MOTELS AND GUEST HOUSES

- Rooms available decreased slightly from 10,650 to 10,608 whereas bed spaces increased from 29,864 to 29,888.
- Room nights occupied increased by 5.0 per cent from 492,626 to 517,041 overall with three star, four star and five star rated establishments recording increases of 4.7 per cent, 18.5 per cent and 8.5 per cent respectively.
- The room occupancy rate overall rose from 50.3 per cent to 53.0 per cent, ranging from 73.5 per cent for four star rated establishments and 70.5 per cent for five star rated establishments to 26.5 per cent for one star establishments. By region, the room occupancy rate ranged from 62.3 per cent for Adelaide Statistical Division to 36.0 per cent for Eyre Statistical Division.
- Guest nights increased by 3.8 per cent from 824,500 to 856,060 and the bed occupancy rate increased from 30.0 per cent to 31.1 per cent.
- Guest arrivals rose by 1.7 per cent from 442,081 to 449,801 while the average length of stay was constant at 1.9 days overall.
- Takings from accommodation increased by 8.3 per cent from \$38.1m to \$41.3m with average takings per room night occupied rising from \$77 to \$80.

HOLIDAY FLATS, UNITS AND HOUSES

- The number of units, etc. available for short-term letting fell by 17 to 1,360.
- Unit nights occupied decreased by 5.8 per cent from 52,563 to 49,516 and the unit occupancy rate fell from 41.6 per cent to 40.0 per cent.
- Unit lettings increased by 0.5 per cent from 10,375 to 10,426 with the average length of stay down from 5.1 days to 4.7 days.
- Accommodation takings fell by 8.8 per cent from \$3.3m to \$3.0m while the average takings per unit night occupied dropped from \$63 to \$61.

CARAVAN PARKS

- Capacity available decreased by 0.4 per cent from 24,448 to 24,341 powered and unpowered sites and cabins, etc.
- Long-term residents occupied 2,103 sites, etc. (8.6 per cent), while 1,567 sites (6.4 per cent) were permanently reserved but only casually occupied by their tenants and an average of 2,963 sites (12.2 per cent) were occupied by other short-term guests.
- Site nights occupied increased by 4.7 per cent from 582,692 to 610,224 and the site occupancy rate rose from 26.0 per cent to 27.2 per cent.
- Accommodation takings rose by 4.0 per cent from \$6.9m to \$7.2m with the average takings per site night occupied steady at \$12.

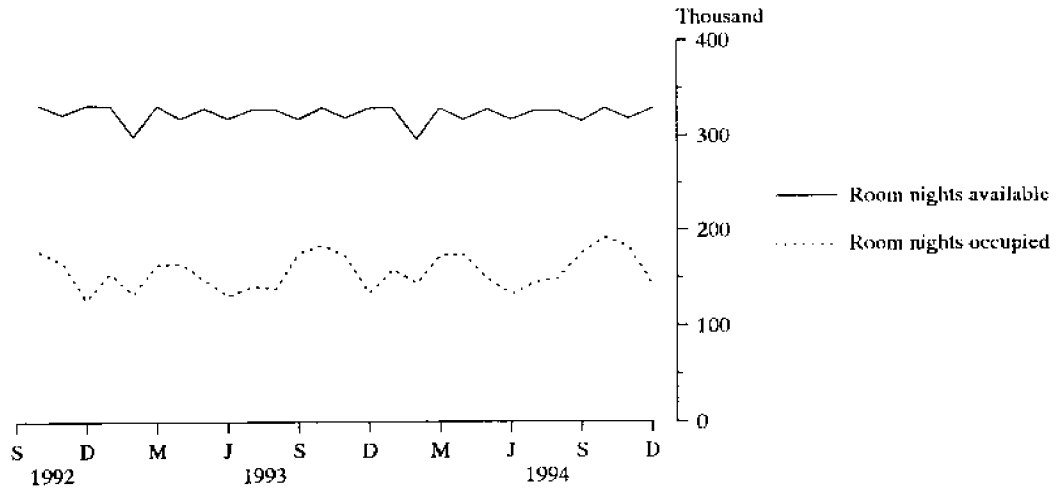
VISITOR HOSTELS

- Bed spaces available rose by 1.9 per cent to 2,075.
- Guest nights rose by 2.2 per cent from 59,296 to 60,628 and the bed occupancy rate increased from 31.6 per cent to 32.0 per cent.
- Guest arrivals rose by 3.5 per cent from 27,628 to 28,587 and the average length of stay was steady at 2.1 days.
- Accommodation takings fell by 2.5 per cent from \$0.64m to \$0.62m with average takings per guest night falling from \$11 to \$10.

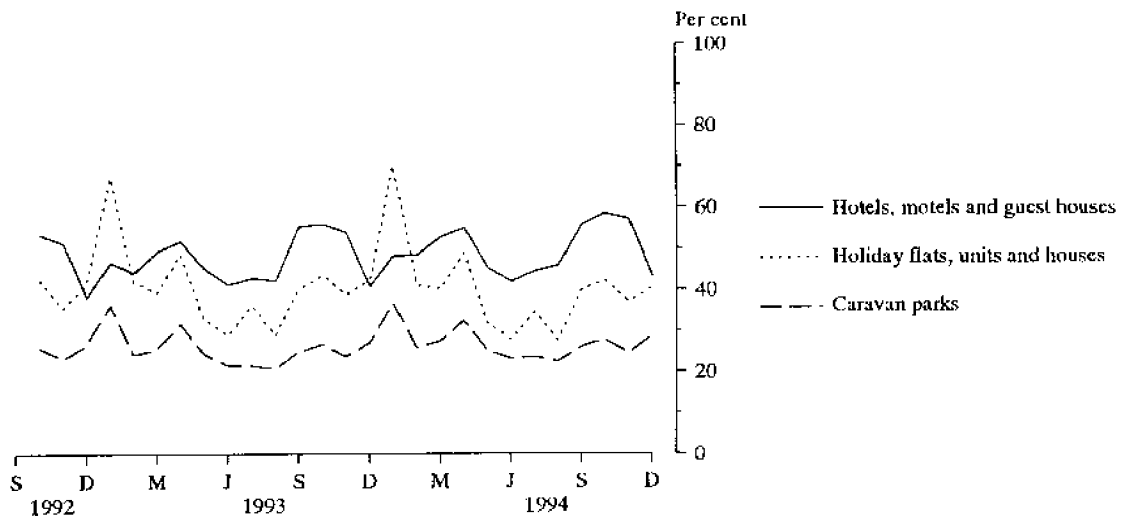
INQUIRIES

- *for further information about statistics in this publication and the availability of related unpublished statistics, contact Brian Hay on 008 077304 or any ABS office.*
- *for information about other ABS statistics and services, refer to the back page of this publication.*

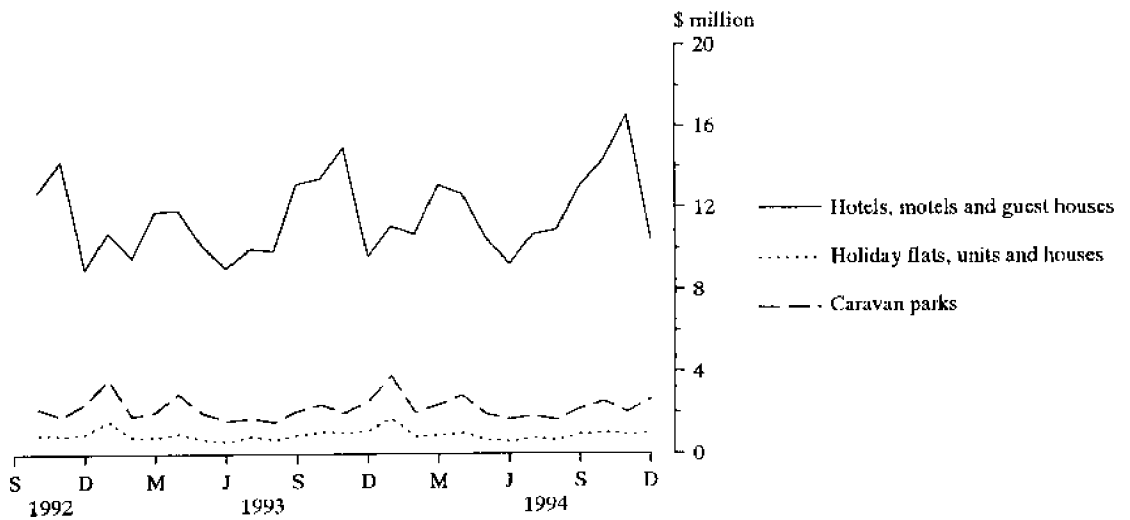
**MONTHLY ROOM NIGHTS AVAILABLE AND OCCUPIED:
HOTELS, MOTELS AND GUEST HOUSES,
SOUTH AUSTRALIA**



**MONTHLY OCCUPANCY RATES,
SOUTH AUSTRALIA**



**MONTHLY TAKINGS FROM ACCOMMODATION,
SOUTH AUSTRALIA**



CONTENTS

<i>Table</i>	<i>Page</i>
" Main features	1
" Diagrams	2
1 Summary of hotels, motels and guest houses with facilities, Adelaide Statistical Division and South Australia	4
2 Summary of caravan parks, Adelaide Statistical Division and South Australia	5
3 Summary of holiday flats, units and houses, South Australia	6
4 Summary of visitor hostels, South Australia	6
5 Hotels, motels and guest houses with facilities by star grading, South Australia	7
6 Hotels, motels and guest houses with facilities by statistical division, South Australia	8
7A Licensed hotels and motels and guest houses with facilities: Statistical subdivisions and selected statistical local areas, South Australia	10
7B Hotels, motels and guest houses with facilities: Statistical divisions and selected subdivisions and statistical local areas, South Australia	12
8 Holiday flats, units and houses: Statistical divisions and selected subdivisions, South Australia	14
9 Caravan parks by statistical division, South Australia	16
10 Caravan parks: Statistical divisions and selected subdivisions and statistical local areas, South Australia	18
11 Visitor hostels by statistical division, South Australia	20
" Explanatory Notes	21
" Appendix: Statistical divisions, subdivisions and statistical local areas, South Australia	24
" Reference map – statistical divisions and subdivisions, South Australia	26

TABLE 1 — SUMMARY OF HOTELS, MOTELS AND GUEST HOUSES WITH FACILITIES, SOUTH AUSTRALIA (a)

Particulars	Unit	Quarter ended				Year ended			
		September 1993	December 1993	March 1994	June 1994	September 1994	December 1994	December 1993	December 1994
ADELAIDE STATISTICAL DIVISION — TOTAL HOTELS, MOTELS AND GUEST HOUSES WITH FACILITIES									
Establishments	No.	118	114	114	115	114	115
Guest rooms	No.	5,351	5,379	5,382	5,382	5,378	5,380
Bed spaces	No.	14,171	14,278	14,284	14,345	14,313	14,412
Employment (persons)	No.	4,661	4,575	4,383	4,371	4,395	4,735
Room nights occupied	No.	267,684	289,899	288,721	260,162	275,204	307,916	1,070,825	1,132,003
Room occupancy rate	per cent	54.4	58.6	59.7	53.1	55.6	62.3	54.6	57.7
Guest nights	No.	424,563	472,171	474,936	406,604	430,411	494,226	1,733,726	1,806,177
Bed occupancy rate	per cent	32.6	36.0	37.0	31.1	32.7	37.3	33.3	34.5
Guest arrivals	No.	192,246	214,341	225,382	185,159	204,073	220,782	780,440	835,396
Average length of stay	days	2.2	2.2	2.1	2.2	2.1	2.2	2.2	2.2
Takings from accommodation	\$'000	22,633	26,696	24,291	21,614	23,562	29,253	91,085	98,720
SOUTH AUSTRALIA — LICENSED HOTELS WITH FACILITIES									
Establishments	No.	121	114	113	116	116	117
Guest rooms	No.	4,520	4,479	4,453	4,420	4,426	4,300
Bed spaces	No.	11,044	10,929	10,913	10,935	10,954	10,593
Employment (persons)	No.	5,196	5,134	4,928	4,955	5,087	5,378
Room nights occupied	No.	199,691	209,975	201,071	193,539	209,008	208,544	777,051	812,162
Room occupancy rate	per cent	48.0	51.0	50.3	48.1	51.3	52.8	47.1	50.6
Guest nights	No.	303,453	322,018	309,616	289,058	315,548	318,723	1,192,217	1,232,945
Bed occupancy rate	per cent	29.9	32.0	31.6	29.0	31.3	32.7	29.7	31.2
Guest arrivals	No.	152,231	157,554	160,333	137,238	163,665	150,704	591,483	611,940
Average length of stay	days	2.0	2.0	1.9	2.1	1.9	2.1	2.0	2.0
Takings from accommodation	\$'000	16,861	19,385	17,328	16,068	17,752	19,834	66,077	70,983
SOUTH AUSTRALIA — MOTELS AND GUEST HOUSES WITH FACILITIES									
Establishments	No.	236	228	229	229	226	226
Guest rooms	No.	6,084	6,171	6,172	6,177	6,134	6,308
Bed spaces	No.	18,653	18,935	18,963	18,963	18,792	19,295
Employment (persons)	No.	2,428	2,490	2,400	2,360	2,454	2,581
Room nights occupied	No.	256,703	282,651	276,736	263,350	262,488	308,497	1,071,790	1,111,071
Room occupancy rate	per cent	45.9	49.8	49.8	46.9	46.8	53.2	47.9	49.2
Guest nights	No.	440,431	502,482	503,530	456,848	444,599	537,337	1,897,818	1,942,314
Bed occupancy rate	per cent	25.7	28.9	29.5	26.5	25.9	30.3	27.7	28.0
Guest arrivals	No.	253,797	284,527	277,115	265,934	262,576	299,097	1,050,980	1,104,722
Average length of stay	days	1.7	1.8	1.8	1.7	1.7	1.8	1.8	1.8
Takings from accommodation	\$'000	16,272	18,711	17,679	16,478	16,982	21,431	68,536	72,570
SOUTH AUSTRALIA — TOTAL HOTELS, MOTELS AND GUEST HOUSES WITH FACILITIES									
Establishments	No.	357	342	342	345	342	343
Guest rooms	No.	10,604	10,650	10,625	10,597	10,560	10,608
Bed spaces	No.	29,697	29,864	29,876	29,898	29,746	29,888
Employment (persons)	No.	7,624	7,624	7,328	7,315	7,541	7,959
Room nights occupied	No.	456,394	492,626	477,807	456,889	471,496	517,041	1,848,841	1,923,233
Room occupancy rate	per cent	46.8	50.3	50.0	47.4	48.7	53.0	47.6	49.8
Guest nights	No.	743,884	824,500	813,146	745,906	760,147	856,060	3,090,035	3,175,259
Bed occupancy rate	per cent	27.2	30.0	30.3	27.4	27.9	31.1	28.4	29.2
Guest arrivals	No.	406,028	442,081	437,448	403,172	426,241	449,801	1,642,463	1,716,662
Average length of stay	days	1.8	1.9	1.9	1.9	1.8	1.9	1.9	1.8
Takings from accommodation	\$'000	33,133	38,096	35,007	32,547	34,734	41,265	134,613	143,553

(a) From December quarter 1993, establishments with fewer than 5 rooms have been formally excluded from the scope of this collection. See Explanatory Note 2 (page 21).

TABLE 2 — SUMMARY OF CARAVAN PARKS, SOUTH AUSTRALIA

Particulars	Unit	Quarter ended				Year ended			
		September 1993	December 1993	March 1994	June 1994	September 1994	December 1994	December 1993	December 1994
ADELAIDE STATISTICAL DIVISION — TOTAL CARAVAN PARKS									
Establishments	No.	26	26	26	26	26	26
Capacity									
On-site vans	No.	259	261	261	245	255	254
Other powered sites	No.	2,646	2,646	2,650	2,541	2,537	2,532
Unpowered sites	No.	418	410	405	412	412	409
Cabins, etc.	No.	369	369	369	374	376	394
<i>Total capacity</i>	<i>No.</i>	<i>3,692</i>	<i>3,686</i>	<i>3,685</i>	<i>3,572</i>	<i>3,580</i>	<i>3,589</i>
Sites occupied by long-term guests	No.	1,109	1,063	1,085	1,063	1,086	1,118
Other sites permanently reserved	No.	30	31	32	34	24	29
Employment (persons)	No.	153	160	157	139	131	144
Site nights occupied	No.	150,227	166,949	188,646	151,655	147,281	170,310	657,696	657,892
Site occupancy rate	per cent	44.2	49.2	56.9	46.7	44.7	51.6	49.0	50.0
Takings from accommodation	\$'000	1,730	2,337	2,749	1,888	1,805	2,337	8,348	8,779
SOUTH AUSTRALIA — SHORT-TERM CARAVAN PARKS									
Establishments	No.	168	167	166	167	171	172
Capacity									
On-site vans	No.	934	939	934	902	884	890
Other powered sites	No.	12,021	11,994	11,908	11,873	12,031	12,062
Unpowered sites	No.	5,810	5,736	5,510	5,527	5,746	5,757
Cabins, etc.	No.	1,227	1,256	1,254	1,289	1,327	1,417
<i>Total capacity</i>	<i>No.</i>	<i>19,992</i>	<i>19,925</i>	<i>19,606</i>	<i>19,591</i>	<i>19,988</i>	<i>20,126</i>
Sites occupied by long-term guests	No.	605	585	604	616	642	708
Other sites permanently reserved	No.	1,437	1,467	1,505	1,502	1,499	1,547
Employment (persons)	No.	584	593	594	586	573	621
Site nights occupied	No.	352,153	427,273	500,304	429,313	384,095	454,447	1,677,807	1,768,159
Site occupancy rate	per cent	19.1	23.4	28.4	24.3	20.9	24.5	23.0	24.5
Takings from accommodation	\$'000	3,916	5,370	6,611	4,893	4,211	5,681	20,331	21,397
SOUTH AUSTRALIA — LONG-TERM CARAVAN PARKS									
Establishments	No.	43	44	44	44	43	43
Capacity									
On-site vans	No.	252	252	245	244	272	272
Other powered sites	No.	2,795	2,836	2,859	2,868	2,716	2,731
Unpowered sites	No.	1,071	1,046	1,042	1,042	886	883
Cabins, etc.	No.	390	389	390	391	378	329
<i>Total capacity</i>	<i>No.</i>	<i>4,508</i>	<i>4,523</i>	<i>4,536</i>	<i>4,545</i>	<i>4,252</i>	<i>4,215</i>
Sites occupied by long-term guests	No.	1,399	1,364	1,378	1,368	1,406	1,395
Other sites permanently reserved	No.	30	29	37	36	13	20
Employment (persons)	No.	145	156	155	147	144	144
Site nights occupied	No.	152,778	155,419	155,939	158,456	151,279	155,777	623,243	621,451
Site occupancy rate	per cent	36.8	37.3	38.2	38.3	38.7	40.2	38.5	38.8
Takings from accommodation	\$'000	1,415	1,549	1,580	1,521	1,416	1,516	5,958	6,033
SOUTH AUSTRALIA — TOTAL CARAVAN PARKS									
Establishments	No.	211	211	210	211	214	215
Capacity									
On-site vans	No.	1,186	1,191	1,179	1,146	1,156	1,162
Other powered sites	No.	14,816	14,830	14,767	14,741	14,747	14,793
Unpowered sites	No.	6,881	6,782	6,552	6,569	6,632	6,640
Cabins, etc.	No.	1,617	1,645	1,644	1,680	1,705	1,746
<i>Total capacity</i>	<i>No.</i>	<i>24,500</i>	<i>24,448</i>	<i>24,142</i>	<i>24,136</i>	<i>24,240</i>	<i>24,341</i>
Sites occupied by long-term guests	No.	2,004	1,949	1,982	1,984	2,048	2,103
Other sites permanently reserved	No.	1,467	1,496	1,542	1,538	1,512	1,567
Employment (persons)	No.	729	749	749	733	717	765
Site nights occupied	No.	504,931	582,692	656,243	587,769	535,374	610,224	2,301,050	2,389,610
Site occupancy rate	per cent	22.4	26.0	30.2	26.9	24.0	27.2	25.8	27.1
Takings from accommodation	\$'000	5,331	6,918	8,192	6,414	5,628	7,197	26,289	27,430

TABLE 3 — SUMMARY OF HOLIDAY FLATS, UNITS AND HOUSES, SOUTH AUSTRALIA

Particulars	Unit	Quarter ended				Year ended			
		September 1993	December 1993	March 1994	June 1994	September 1994	December 1994	December 1993	December 1994
Letting entities	No.	87	87	86	89	88	90
Flats, units and houses									
Single bedroom	No.	366	360	304	317	321	318
Multiple bedroom	No.	996	1,017	1,017	1,021	1,005	1,042
Total flats, units and houses	No.	1,362	1,377	1,321	1,338	1,326	1,360
Bed spaces	No.	6,747	6,865	6,719	6,757	6,742	6,900
Employment (persons) (a)	No.	260	266	275	266	240	244
Unit nights occupied	No.	43,696	52,563	60,475	43,848	41,534	49,516	200,062	195,373
Unit occupancy rate	per cent	35.2	41.6	50.9	36.1	34.0	40.0	40.8	40.2
Unit lettings	No.	9,493	10,375	10,258	8,976	9,239	10,426	39,026	38,899
Average length of stay	days	4.6	5.1	5.9	4.9	4.5	4.7	5.1	5.0
Takings from accommodation	\$'000	2,551	3,290	3,546	2,313	2,418	3,000	11,463	11,277

(a) Employment numbers exclude real estate agents and their employees.

TABLE 4 — SUMMARY OF VISITOR HOSTELS, SOUTH AUSTRALIA

Particulars	Unit	Quarter ended				Year ended			
		September 1993	December 1993	March 1994	June 1994	September 1994	December 1994	December 1993	December 1994
Establishments	No.	42	42	44	46	41	42
Bed spaces	No.	2,029	2,037	2,098	2,118	2,022	2,075
Employment (persons)	No.	121	123	144	136	127	136
Guest nights	No.	47,999	59,296	67,089	51,710	48,476	60,628	211,316	227,903
Bed occupancy rate	per cent	25.9	31.6	35.5	27.1	26.1	32.0	29.1	30.2
Guest arrivals	No.	28,272	27,628	31,479	27,713	28,592	28,587	110,619	116,371
Average length of stay	days	1.7	2.1	2.1	1.9	1.7	2.1	1.9	2.0
Takings from accommodation	\$'000	432	638	673	482	428	622	2,139	2,206

TABLE 5 — HOTELS, MOTELS AND GUEST HOUSES WITH FACILITIES BY STAR GRADING,
SOUTH AUSTRALIA

Particulars	Star grading						Total
	1	2	3	4	5	Ungraded	
ESTABLISHMENTS, CAPACITY AND EMPLOYMENT							
<i>December quarter 1993—</i>							
Establishments	13	148	137	17	3	24	342
Guest rooms	179	3,314	4,670	1,111	1,083	293	10,650
Bed spaces	370	9,348	13,818	3,408	2,166	754	29,864
Employment (persons)	241	2,137	2,583	1,030	1,058	575	7,624
<i>December quarter 1994—</i>							
Establishments	13	144	141	18	3	24	343
Guest rooms	155	3,030	4,776	1,243	1,081	323	10,608
Bed spaces	332	8,488	14,076	3,943	2,166	883	29,888
Employment (persons)	224	2,019	2,873	1,152	1,047	644	7,959
ROOM NIGHTS OCCUPIED							
<i>December quarter 1993</i>	3,724	116,785	226,619	70,965	64,604	9,929	492,626
<i>1994—</i>							
October	1,521	42,983	88,154	29,800	26,183	3,598	192,239
November	1,248	35,209	84,174	30,803	26,693	3,952	182,079
December	1,016	32,318	64,942	23,492	17,199	3,756	142,723
<i>December quarter 1994</i>	3,785	110,510	237,270	84,095	70,075	11,306	517,041
ROOM OCCUPANCY RATES (per cent)							
<i>December quarter 1993</i>	22.6	38.3	52.8	69.4	64.8	36.8	50.3
<i>1994—</i>							
October	31.7	45.8	59.5	77.3	78.1	35.9	58.5
November	26.8	38.8	58.7	82.6	82.3	40.8	57.2
December	21.1	34.5	43.9	61.0	51.3	37.5	43.4
<i>December quarter 1994</i>	26.5	39.7	54.0	73.5	70.5	38.0	53.0
GUEST NIGHTS							
<i>December quarter 1993</i>	4,956	202,849	396,280	114,611	92,113	13,691	824,500
<i>1994—</i>							
October	2,370	76,991	151,716	47,235	37,724	5,714	321,750
November	1,836	58,789	134,270	48,342	36,470	6,143	285,850
December	1,506	59,932	116,697	38,767	25,270	6,288	248,460
<i>December quarter 1994</i>	5,712	195,712	402,683	134,344	99,464	18,145	856,060
BED OCCUPANCY RATES (per cent)							
<i>December quarter 1993</i>	14.6	23.6	31.2	36.6	46.2	19.7	30.0
<i>1994—</i>							
October	23.0	29.3	34.8	38.6	56.2	20.9	34.7
November	18.4	23.1	31.8	40.9	56.1	23.2	31.9
December	14.6	22.8	26.7	31.7	37.6	23.0	26.8
<i>December quarter 1994</i>	18.7	25.1	31.1	37.0	49.9	22.3	31.1
GUEST ARRIVALS							
<i>December quarter 1993</i>	2,660	121,299	220,564	50,504	40,899	6,155	442,081
<i>1994—</i>							
October	1,110	45,550	84,378	21,789	13,788	3,393	170,008
November	816	34,569	71,884	19,443	13,715	3,050	143,477
December	740	36,777	66,845	17,413	10,953	3,588	136,316
<i>December quarter 1994</i>	2,666	116,896	223,107	58,645	38,456	10,031	449,801
AVERAGE LENGTH OF STAY (days)							
<i>December quarter 1993</i>	1.9	1.7	1.8	2.3	2.3	2.2	1.9
<i>December quarter 1994</i>	2.1	1.7	1.8	2.3	2.6	1.8	1.9
TAKINGS FROM ACCOMMODATION (\$'000)							
<i>December quarter 1993</i>	103	5,555	15,538	7,568	8,816	516	38,096
<i>1994—</i>							
October	48	1,998	5,859	2,930	3,334	136	14,306
November	39	1,807	6,334	3,746	4,432	153	16,511
December	33	1,510	4,340	2,426	1,993	147	10,449
<i>December quarter 1994</i>	121	5,315	16,533	9,102	9,759	435	41,265

TABLE 6 — HOTELS, MOTELS AND GUEST HOUSES WITH FACILITIES BY STATISTICAL DIVISION,
SOUTH AUSTRALIA

Particulars	Adelaide (SD)			Outer Adelaide (SD)			Yorke and Lower North (SD)			Murray Lands (SD)		
	Licensed hotels	Motels, etc.	Total	Licensed hotels	Motels, etc.	Total	Licensed hotels	Motels, etc.	Total	Licensed hotels	Motels, etc.	Total
ESTABLISHMENTS, CAPACITY AND EMPLOYMENT												
<i>December quarter 1993—</i>												
Establishments	51	63	114	8	36	44	8	16	24	10	23	33
Guest rooms	2,746	2,633	5,379	245	741	986	116	262	378	409	409	818
Bed spaces	6,279	7,999	14,278	768	2,356	3,124	326	810	1,136	1,029	1,288	2,317
Employment (persons)	3,529	1,046	4,575	307	354	661	70	112	182	403	135	538
<i>December quarter 1994—</i>												
Establishments	48	67	115	8	34	42	13	13	26	9	22	31
Guest rooms	2,551	2,829	5,380	245	727	972	175	230	405	359	403	762
Bed spaces	5,781	8,631	14,412	786	2,320	3,106	503	711	1,214	957	1,266	2,223
Employment (persons)	3,579	1,156	4,735	361	353	714	137	96	233	442	128	570
ROOM NIGHTS OCCUPIED												
<i>December quarter 1993</i>	151,028	138,871	289,899	11,380	31,314	42,694	2,596	11,034	13,630	12,875	15,798	28,673
<i>1994—</i>												
October	54,598	55,914	110,512	4,209	11,420	15,629	1,631	3,992	5,623	4,721	6,499	11,220
November	56,488	57,704	114,192	3,569	9,999	13,568	1,437	3,121	4,558	4,005	5,290	9,295
December	38,281	44,931	83,212	3,639	9,136	12,775	1,436	2,517	3,953	3,684	4,527	8,211
<i>December quarter 1994</i>	149,367	158,549	307,916	11,417	30,555	41,972	4,504	9,630	14,134	12,410	16,316	28,726
ROOM OCCUPANCY RATES (per cent)												
<i>December quarter 1993</i>	59.9	57.4	58.6	50.5	45.9	47.1	24.3	45.8	39.2	34.2	42.0	38.1
<i>1994—</i>												
October	69.0	63.8	66.3	55.4	50.7	51.9	30.1	56.0	44.8	42.4	52.0	47.5
November	74.0	68.0	70.8	48.6	45.8	46.5	27.4	45.2	37.5	37.2	43.8	40.7
December	48.6	51.2	50.0	47.9	40.5	42.4	26.5	35.3	31.5	33.1	36.2	34.8
<i>December quarter 1994</i>	63.8	60.9	62.3	50.7	45.7	46.9	28.0	45.5	37.9	37.6	44.0	41.0
GUEST NIGHTS												
<i>December quarter 1993</i>	225,438	246,733	472,171	23,732	63,113	86,845	3,868	20,691	24,559	19,491	29,423	48,914
<i>1994—</i>												
October	80,183	95,654	175,837	8,651	23,068	31,719	2,492	7,694	10,186	7,570	12,007	19,577
November	80,735	97,126	177,861	6,481	19,080	25,561	2,168	5,101	7,269	5,813	8,857	14,670
December	59,024	81,504	140,528	7,285	19,470	26,755	2,529	5,142	7,671	5,770	8,863	14,633
<i>December quarter 1994</i>	219,942	274,284	494,226	22,417	61,618	84,035	7,189	17,937	25,126	19,153	29,727	48,880
BED OCCUPANCY RATES (per cent)												
<i>December quarter 1993</i>	39.1	33.6	36.0	33.6	29.1	30.2	12.9	27.8	23.5	20.6	24.8	22.9
<i>1994—</i>												
October	44.7	35.8	39.4	35.5	32.1	32.9	16.0	34.9	27.1	25.5	30.6	28.4
November	46.6	37.5	41.2	27.5	27.4	27.4	14.4	23.9	20.0	20.2	23.3	22.0
December	33.0	30.5	31.5	29.9	27.1	27.8	16.2	23.3	20.4	19.4	22.6	21.2
<i>December quarter 1994</i>	41.4	34.5	37.3	31.0	28.9	29.4	15.5	27.4	22.5	21.8	25.5	23.9
GUEST ARRIVALS												
<i>December quarter 1993</i>	94,392	119,949	214,341	14,426	35,872	50,298	2,282	14,249	16,531	13,355	20,718	34,073
<i>1994—</i>												
October	31,045	48,637	79,682	4,735	12,727	17,462	1,607	5,032	6,639	5,147	7,517	12,664
November	30,545	43,819	74,364	4,173	10,420	14,593	1,493	3,446	4,939	3,604	6,368	9,972
December	25,037	41,699	66,736	4,426	10,719	15,145	1,465	3,444	4,909	3,871	5,945	9,816
<i>December quarter 1994</i>	86,627	134,155	220,782	13,334	33,866	47,200	4,565	11,922	16,487	12,622	19,830	32,452
AVERAGE LENGTH OF STAY (days)												
<i>December quarter 1993</i>	2.4	2.1	2.2	1.6	1.8	1.7	1.7	1.5	1.5	1.5	1.4	1.4
<i>December quarter 1994</i>	2.5	2.0	2.2	1.7	1.8	1.8	1.6	1.5	1.5	1.5	1.5	1.5
TAKINGS FROM ACCOMMODATION (\$'000)												
<i>December quarter 1993</i>	16,454	10,242	26,696	736	2,124	2,859	93	614	707	562	853	1,415
<i>1994—</i>												
October	5,617	3,996	9,614	270	785	1,056	67	227	294	218	348	566
November	7,440	5,208	12,648	232	696	927	64	178	241	188	288	476
December	3,764	3,227	6,992	251	637	888	73	151	224	172	255	427
<i>December quarter 1994</i>	16,822	12,431	29,253	753	2,118	2,871	204	555	759	578	891	1,469

TABLE 6 — HOTELS, MOTELS AND GUEST HOUSES WITH FACILITIES BY STATISTICAL DIVISION,
SOUTH AUSTRALIA—continued

Particulars	South East (SD)			Eyre (SD)			Northern (SD)			South Australia		
	Licensed hotels	Motels, etc.	Total	Licensed hotels	Motels, etc.	Total	Licensed hotels	Motels, etc.	Total	Licensed hotels	Motels, etc.	Total
ESTABLISHMENTS, CAPACITY AND EMPLOYMENT												
<i>December quarter 1993—</i>												
Establishments	9	43	52	12	18	30	16	29	45	114	228	342
Guest rooms	166	1,002	1,168	257	368	625	540	756	1,296	4,479	6,171	10,650
Bed spaces	404	3,117	3,521	657	1,085	1,742	1,466	2,280	3,746	10,929	18,935	29,864
Employment (persons)	193	382	575	259	137	396	373	324	697	5,134	2,490	7,624
<i>December quarter 1994—</i>												
Establishments	9	43	52	13	18	31	17	29	46	117	226	343
Guest rooms	166	1,002	1,168	265	366	631	539	751	1,290	4,300	6,308	10,608
Bed spaces	408	3,044	3,452	690	1,082	1,772	1,468	2,241	3,709	10,593	19,295	29,888
Employment (persons)	190	376	566	269	129	398	400	343	743	5,378	2,581	7,959
ROOM NIGHTS OCCUPIED												
<i>December quarter 1993</i>	6,152	41,036	47,188	7,816	11,933	19,749	18,128	32,665	50,793	209,975	282,651	492,626
<i>1994—</i>												
October	2,285	17,117	19,402	2,958	5,294	8,252	7,123	14,478	21,601	77,525	114,714	192,239
November	2,230	15,101	17,331	2,513	3,687	6,200	5,346	11,589	16,935	75,588	106,491	182,079
December	1,725	12,233	13,958	2,378	4,078	6,456	4,288	9,870	14,158	55,431	87,292	142,723
<i>December quarter 1994</i>	6,240	44,451	50,691	7,849	13,059	20,908	16,757	35,937	52,694	208,544	308,497	517,041
ROOM OCCUPANCY RATES (per cent)												
<i>December quarter 1993</i>	40.3	44.5	43.9	33.1	35.2	34.3	36.5	47.0	42.6	51.0	49.8	50.3
<i>1994—</i>												
October	44.4	55.1	53.6	36.0	46.7	42.2	42.6	62.2	54.0	58.2	58.7	58.5
November	44.8	50.2	49.5	31.6	33.6	32.8	33.1	51.4	43.8	58.7	56.3	57.2
December	33.5	39.4	38.5	28.9	35.9	33.0	25.7	42.4	35.4	41.7	44.6	43.4
<i>December quarter 1994</i>	40.9	48.2	47.2	32.2	38.8	36.0	33.8	52.0	44.4	52.8	53.2	53.0
GUEST NIGHTS												
<i>December quarter 1993</i>	8,427	68,924	77,351	12,321	20,107	32,428	28,741	53,491	82,232	322,018	502,482	824,500
<i>1994—</i>												
October	3,352	29,885	33,237	4,673	9,503	14,176	12,609	24,409	37,018	119,530	202,220	321,750
November	3,152	23,193	26,345	3,400	5,834	9,234	8,396	16,514	24,910	110,145	175,705	285,850
December	2,453	21,262	23,715	4,011	8,056	12,067	7,976	15,115	23,091	89,048	159,412	248,460
<i>December quarter 1994</i>	8,957	74,340	83,297	12,084	23,393	35,477	28,981	56,038	85,019	318,723	537,337	856,060
BED OCCUPANCY RATES (per cent)												
<i>December quarter 1993</i>	22.7	24.0	23.9	20.4	20.1	20.2	21.3	25.5	23.9	32.0	28.9	30.0
<i>1994—</i>												
October	26.5	31.7	31.1	21.8	28.3	25.8	27.7	35.1	32.2	36.4	33.8	34.7
November	25.8	25.4	25.4	16.4	18.0	17.4	19.1	24.6	22.4	34.7	30.4	31.9
December	19.4	22.5	22.2	18.8	24.0	22.0	17.5	21.8	20.1	27.2	26.7	26.8
<i>December quarter 1994</i>	23.9	26.5	26.2	19.0	23.5	21.8	21.5	27.2	24.9	32.7	30.3	31.1
GUEST ARRIVALS												
<i>December quarter 1993</i>	5,055	44,710	49,765	8,817	14,454	23,271	19,227	34,575	53,802	157,554	284,527	442,081
<i>1994—</i>												
October	2,046	18,058	20,104	3,403	6,724	10,127	8,559	14,771	23,330	56,542	113,466	170,008
November	1,801	14,816	16,617	2,289	4,046	6,335	6,035	10,622	16,657	49,940	93,537	143,477
December	1,342	13,975	15,317	2,979	5,788	8,767	5,102	10,524	15,626	44,222	92,094	136,316
<i>December quarter 1994</i>	5,189	46,849	52,038	8,671	16,558	25,229	19,696	35,917	55,613	150,704	299,097	449,801
AVERAGE LENGTH OF STAY (days)												
<i>December quarter 1993</i>	1.7	1.5	1.6	1.4	1.4	1.4	1.5	1.5	1.5	2.0	1.8	1.9
<i>December quarter 1994</i>	1.7	1.6	1.6	1.4	1.4	1.4	1.5	1.6	1.5	2.1	1.8	1.9
TAKINGS FROM ACCOMMODATION (\$'000)												
<i>December quarter 1993</i>	218	2,237	2,454	383	644	1,027	939	1,997	2,937	19,385	18,711	38,096
<i>1994—</i>												
October	91	970	1,061	142	291	433	375	908	1,283	6,781	7,525	14,306
November	84	828	912	112	204	316	279	712	991	8,398	8,113	16,511
December	70	698	768	118	225	343	208	599	807	4,656	5,793	10,449
<i>December quarter 1994</i>	245	2,496	2,741	372	720	1,092	862	2,219	3,081	19,834	21,431	41,265

TABLE 7A — LICENSED HOTELS AND MOTELS AND GUEST HOUSES WITH FACILITIES: STATISTICAL

Statistical Subdivisions and selected Statistical Local Areas	Establish- ments	Guest rooms	Bed spaces	Employ- ment (persons)	Room nights occupied			Room occupancy rates (per cent)				
					Oct.	Nov.	Dec.	Dec. qtr	Oct.	Nov.	Dec.	Dec. qtr
LICENSED HOTELS WITH FACILITIES												
Northern and Southern (SSDs)	21	458	1,302	1,359	8,402	8,865	7,438	24,705	59.2	64.5	52.4	58.6
Western (SSD)	11	188	463	366	2,916	2,639	2,176	7,731	50.0	48.0	39.2	45.8
Adelaide (C)	11	1,842	3,861	1,563	42,479	44,117	27,969	114,565	74.4	79.8	49.0	67.6
Eastern (SSD) — Balance	5	63	155	291	801	867	698	2,366	41.0	45.9	35.7	40.8
Eastern (SSD)	16	1,905	4,016	1,854	43,280	44,984	28,667	116,931	73.3	78.7	48.5	66.7
Barossa, Kangaroo Island, Onkaparinga, Fleurieu and Lower North (SSDs)	11	298	942	409	4,785	4,195	4,289	13,269	51.8	46.9	46.4	48.4
Yorke (SSD)	10	122	347	89	1,055	811	786	2,652	27.9	22.2	20.8	23.6
Riverland (SSD)	6	323	877	391	4,301	3,677	3,480	11,458	43.0	37.9	34.8	38.6
Murray Mallee (SSD)	3	36	80	51	420	328	204	952	37.6	30.4	18.3	28.7
Upper South East (SSD)	4	81	203	90	1,063	880	616	2,559	42.3	36.2	24.5	34.3
Lower South East (SSD)	5	85	205	100	1,222	1,350	1,109	3,681	46.4	52.9	42.1	47.1
Lincoln (SSD)	9	127	287	152	1,243	1,255	1,032	3,530	31.6	32.9	26.2	30.2
West Coast (SSD)	4	138	403	117	1,715	1,258	1,346	4,319	40.1	30.4	31.5	34.0
Whyalla (SSD)	6	143	364	213	2,504	1,817	1,669	5,990	56.5	42.4	37.6	45.5
Flinders Ranges (SSD)	4	90	239	37	1,176	635	375	2,186	42.2	23.5	13.4	26.4
Pirie and Far North (SSDs)	7	306	865	150	3,443	2,894	2,244	8,581	36.3	31.5	23.7	30.5
<i>Total South Australia</i>	117	4,300	10,593	5,378	77,525	75,588	55,431	208,544	58.2	58.7	41.7	52.8
MOTELS AND GUEST HOUSES WITH FACILITIES												
Northern and Southern (SSDs)	24	844	2,606	349	14,293	14,295	11,672	40,260	54.6	56.5	44.6	51.8
Western (SSD)	5	127	344	40	1,897	2,107	1,674	5,678	48.2	55.3	42.5	48.6
Adelaide (C)	17	1,076	3,211	482	24,916	26,084	19,514	70,514	74.7	80.8	58.5	71.2
Eastern (SSD) — Balance	21	782	2,470	285	14,808	15,218	12,071	42,097	61.1	64.9	49.8	58.5
Eastern (SSD)	38	1,858	5,681	767	39,724	41,302	31,585	112,611	69.0	74.1	54.8	65.9
Barossa, Kangaroo Island, Onkaparinga, Fleurieu and Lower North (SSDs)	40	836	2,625	413	13,694	11,832	10,447	35,973	52.8	47.2	40.3	46.8
Yorke (SSD)	7	121	406	36	1,718	1,288	1,206	4,212	45.8	35.5	32.2	37.8
Riverland (SSD)	12	240	759	81	3,472	2,909	2,620	9,001	46.7	40.4	35.2	40.8
Murray Mallee (SSD)	10	163	507	47	3,027	2,381	1,907	7,315	59.9	48.7	37.7	48.8
Robe (DC)	6	92	308	36	1,039	852	912	2,803	36.4	30.9	32.0	33.1
Upper South East (SSD) — Balance	11	217	640	70	3,246	2,718	2,558	8,522	48.3	41.8	38.0	42.7
Upper South East (SSD)	17	309	948	106	4,235	3,570	3,470	11,325	44.7	38.5	36.2	39.8
Lower South East (SSD)	26	693	2,096	270	12,832	11,531	8,763	33,126	59.7	55.5	40.8	52.0
Lincoln (SSD)	13	222	641	78	3,386	2,375	2,347	8,108	49.2	35.7	34.1	39.7
West Coast (SSD)	5	144	441	51	1,908	1,312	1,731	4,951	42.7	30.4	38.8	37.4
Whyalla (SSD)	5	118	337	66	2,767	2,478	1,930	7,175	75.6	70.0	52.8	66.1
Flinders Ranges (SSD)	12	374	1,186	148	7,400	5,176	5,039	17,615	63.8	46.1	43.5	51.2
Pirie and Far North (SSDs)	12	259	718	129	4,311	3,935	2,901	11,147	53.7	50.6	36.1	46.8
<i>Total South Australia</i>	226	6,308	19,295	2,581	114,714	106,491	87,292	308,497	58.7	56.3	44.6	53.2

SUBDIVISIONS AND SELECTED STATISTICAL LOCAL AREAS, SOUTH AUSTRALIA, DECEMBER QUARTER 1994

<i>Guest nights</i>				<i>Guest arrivals</i>				<i>Takings from accommodation (\$'000)</i>			
<i>Oct.</i>	<i>Nov.</i>	<i>Dec.</i>	<i>Dec. qtr</i>	<i>Oct.</i>	<i>Nov.</i>	<i>Dec.</i>	<i>Dec. qtr</i>	<i>Oct.</i>	<i>Nov.</i>	<i>Dec.</i>	<i>Dec. qtr</i>
LICENSED HOTELS WITH FACILITIES											
13,243	13,957	12,689	39,889	4,201	4,491	4,040	12,732	731	1,007	716	2,455
4,259	3,638	3,062	10,959	1,636	1,511	1,248	4,395	147	164	131	442
61,313	61,673	42,108	165,094	24,585	24,002	19,218	67,805	4,695	6,200	2,880	13,775
1,368	1,467	1,165	4,000	623	541	531	1,695	44	69	37	150
62,681	63,140	43,273	169,094	25,208	24,543	19,749	69,500	4,739	6,268	2,917	13,925
9,642	7,624	8,493	25,759	5,305	4,937	5,114	15,356	294	267	292	853
1,501	1,025	1,321	3,847	1,037	729	777	2,543	43	29	32	103
7,050	5,410	5,503	17,963	4,873	3,361	3,704	11,938	207	178	166	551
520	403	267	1,190	274	243	167	684	12	9	6	27
1,649	1,229	934	3,812	1,097	807	624	2,528	42	33	25	100
1,703	1,923	1,519	5,145	949	994	718	2,661	50	51	45	145
1,804	1,576	1,461	4,841	1,013	913	799	2,725	50	48	44	143
2,869	1,824	2,550	7,243	2,390	1,376	2,180	5,946	91	64	74	229
3,808	2,247	2,189	8,244	1,303	1,059	856	3,218	90	69	53	212
2,094	1,057	568	3,719	1,531	819	486	2,836	54	27	16	97
6,707	5,092	5,219	17,018	5,725	4,157	3,760	13,642	230	183	139	552
119,530	110,145	89,048	318,723	56,542	49,940	44,222	150,704	6,781	8,398	4,656	19,834
MOTELS AND GUEST HOUSES WITH FACILITIES											
25,355	25,184	22,793	73,332	13,618	11,615	11,455	36,688	966	1,161	812	2,939
2,815	3,128	2,826	8,769	2,059	2,160	2,023	6,242	138	177	124	440
39,091	40,948	31,787	111,826	17,716	17,524	14,629	49,869	2,032	2,701	1,585	6,319
28,393	27,866	24,098	80,357	15,244	12,520	13,592	41,356	860	1,168	706	2,734
67,484	68,814	55,885	192,183	32,960	30,044	28,221	91,225	2,892	3,870	2,291	9,053
27,431	22,210	21,901	71,542	15,787	12,523	12,574	40,884	925	807	722	2,455
3,331	1,971	2,711	8,013	1,972	1,343	1,589	4,904	87	66	66	218
6,494	4,663	5,267	16,424	3,896	3,025	3,239	10,160	198	167	156	521
5,513	4,194	3,596	13,303	3,621	3,343	2,706	9,670	150	121	99	370
2,228	1,613	2,082	5,923	1,567	1,253	1,347	4,167	50	39	52	141
5,508	4,170	4,525	14,203	4,602	3,420	3,871	11,893	168	142	136	446
7,736	5,783	6,607	20,126	6,169	4,673	5,218	16,060	218	181	188	587
22,149	17,410	14,655	54,214	11,889	10,143	8,757	30,789	752	647	511	1,909
5,975	3,705	4,470	14,150	3,929	2,463	2,713	9,105	185	129	131	445
3,528	2,129	3,586	9,243	2,795	1,583	3,075	7,453	106	75	94	275
3,618	2,812	2,331	8,761	2,045	1,749	1,428	5,222	169	148	122	438
13,682	8,237	8,233	30,152	7,829	5,274	5,889	18,992	473	330	304	1,106
7,109	5,465	4,551	17,125	4,897	3,599	3,207	11,703	267	234	174	675
202,220	175,705	159,412	537,337	113,466	93,537	92,094	299,097	7,525	8,113	5,793	21,431

TABLE 7B — HOTELS, MOTELS AND GUEST HOUSES WITH FACILITIES: STATISTICAL DIVISIONS AND SELECTED

Statistical Divisions and selected Subdivisions and Statistical Local Areas	Establish- ments	Guest rooms	Bed spaces	Employ- ment (persons)	Room nights occupied				Room occupancy rates (per cent)			
					Oct.	Nov.	Dec.	Dec. qtr	Oct.	Nov.	Dec.	Dec. qtr
Enfield (C) — Pt A	6	143	416	161	2,434	2,844	1,952	7,230	54.9	66.3	44.0	55.0
Salisbury (C)	6	89	273	179	1,169	1,448	1,167	3,784	42.4	54.2	42.3	46.2
Northern (SSD) — Balance	6	159	387	129	1,160	1,204	972	3,336	23.5	25.2	19.7	22.8
Hindmarsh and Woodville (C)	6	125	333	175	2,136	1,757	1,471	5,364	55.1	48.7	40.9	48.4
Western (SSD) — Balance	10	190	474	231	2,677	2,989	2,379	8,045	45.4	52.4	40.4	46.0
Adelaide (C)	28	2,918	7,072	2,045	67,395	70,201	47,483	185,079	74.5	80.2	52.5	68.9
Burnside (C)	9	314	965	120	6,314	6,127	4,907	17,348	64.9	65.0	50.4	60.1
Kensington and Norwood (C)	3	161	487	62	2,374	2,906	1,965	7,245	47.6	60.2	39.4	48.9
Unley (C)	7	214	714	187	4,180	4,320	3,473	11,973	63.0	67.3	52.4	60.8
Eastern (SSD) — Balance	7	156	459	207	2,741	2,732	2,424	7,897	56.7	58.4	50.1	55.0
Glenelg (C)	13	650	2,019	777	13,975	13,611	11,178	38,764	69.4	69.8	55.5	64.8
Marion (C)	5	77	229	252	989	1,129	914	3,032	41.4	48.9	38.3	42.8
Noarlunga (C)	5	84	274	115	1,439	1,455	1,375	4,269	55.3	57.7	52.8	55.2
Southern (SSD) — Balance	4	100	310	95	1,529	1,469	1,552	4,550	49.3	49.0	50.1	49.5
Adelaide (SD)	115	5,380	14,412	4,735	110,512	114,192	83,212	307,916	66.3	70.8	50.0	62.3
Tanunda (DC)	4	128	396	111	2,550	1,924	1,458	5,932	64.3	50.1	36.7	50.4
Barossa (SSD) — Balance	8	133	385	109	2,173	1,774	1,570	5,517	52.7	44.5	38.1	45.1
Dudley (DC)	4	91	270	33	1,380	1,246	1,254	3,880	48.9	45.6	44.5	46.3
Kingscote (DC)	5	111	303	95	2,398	2,021	2,093	6,512	69.7	60.7	60.8	63.8
Mount Barker (DC)	3	101	376	62	1,725	1,814	1,403	4,942	55.1	59.9	44.8	53.2
Victor Harbor (DC)	10	203	657	139	3,256	3,095	2,882	9,233	51.7	50.8	45.8	49.4
Fleurieu (SSD) — Balance	8	205	719	165	2,147	1,694	2,115	5,956	33.8	27.5	33.3	31.6
Outer Adelaide (SD)	42	972	3,106	714	15,629	13,568	12,775	41,972	51.9	46.5	42.4	46.9
Northern Yorke Peninsula (DC)	4	56	196	25	915	700	623	2,238	52.7	41.7	35.9	43.4
Wallaroo (M)	3	64	200	17	570	359	328	1,257	28.7	18.7	16.5	21.3
Yorketown (DC)	4	48	142	18	701	522	545	1,768	47.1	36.3	36.6	40.0
Yorke (SSD) — Balance	6	75	215	65	587	518	496	1,601	25.2	23.0	21.3	23.2
Lower North (SSD)	9	162	461	108	2,850	2,459	1,961	7,270	56.8	50.6	39.0	48.8
Yorke and Lower North (SD)	26	405	1,214	233	5,623	4,558	3,953	14,134	44.8	37.5	31.5	37.9
Baramba (DC)	3	115	332	49	1,330	1,032	1,073	3,435	37.3	29.9	30.1	32.5
Renmark (M)	5	173	510	100	2,110	1,761	1,731	5,602	39.3	33.9	32.3	35.2
Riverland (SSD) — Balance	10	275	794	323	4,333	3,793	3,296	11,422	50.8	46.0	38.7	45.1
Meningie (DC)	4	45	109	16	677	563	472	1,712	48.5	41.7	33.8	41.4
Murray Bridge (RC)	5	90	272	42	1,673	1,368	998	4,039	60.0	50.7	35.8	48.8
Murray Mallee (SSD) — Balance	4	64	206	40	1,097	778	641	2,516	55.3	40.5	32.3	42.7
Murray Lands (SD)	31	762	2,223	570	11,220	9,295	8,211	28,726	47.5	40.7	34.8	41.0
Robe (DC)	6	92	308	36	1,039	852	912	2,803	36.4	30.9	32.0	33.1
Tatiara (DC)	6	135	384	74	2,233	1,831	1,624	5,688	53.4	45.2	38.8	45.8
Upper South East (SSD) — Balance	9	163	459	86	2,076	1,767	1,550	5,393	41.1	36.1	30.7	36.0
Millicent (DC)	3	76	219	34	588	706	544	1,838	25.0	31.0	23.1	26.3
Mount Gambier (C)	21	617	1,806	277	11,833	10,859	8,087	30,779	61.9	58.7	42.3	54.2
Lower South East (SSD) — Balance	7	85	276	59	1,633	1,316	1,241	4,190	62.0	51.6	47.1	53.6
South East (SD)	52	1,168	3,452	566	19,402	17,331	13,958	50,691	53.6	49.5	38.5	47.2
Le Hunte (DC)	3	51	127	23	601	587	400	1,588	38.0	38.4	25.3	33.8
Port Lincoln (C)	10	177	501	132	2,951	2,303	2,147	7,401	53.8	43.4	39.1	45.4
Lincoln (SSD) — Balance	9	121	300	75	1,077	740	832	2,649	28.7	20.4	22.2	23.8
Murat Bay (DC) and Streaky Bay (DC)	6	201	554	137	2,717	2,116	2,130	6,963	43.6	35.1	34.2	37.7
Unincorporated West Coast	3	81	290	31	906	454	947	2,307	36.1	18.7	37.7	31.0
Eyre (SD)	31	631	1,772	398	8,252	6,200	6,456	20,908	42.2	32.8	33.0	36.0
Whyalla (SSD)	11	261	701	279	5,271	4,295	3,599	13,165	65.1	54.9	44.5	54.8
Port Pirie (C)	5	120	315	60	1,926	1,823	1,508	5,257	51.8	50.6	40.5	47.6
Pirie (SSD) — Balance	4	47	145	21	649	609	425	1,663	44.5	43.2	29.2	38.9
Port Augusta (C)	9	294	859	114	5,178	4,409	4,519	14,106	56.8	50.0	49.6	52.2
Flinders Ranges (SSD) — Balance	7	170	566	71	3,398	1,402	895	5,695	64.5	27.5	17.0	36.4
Far North (SSD)	10	398	1,123	198	5,179	4,397	3,212	12,788	42.0	36.8	26.0	34.9
Northern (SD)	46	1,290	3,709	743	21,601	16,935	14,158	52,694	54.0	43.8	35.4	44.4
South Australia	343	10,608	29,888	7,959	192,239	182,079	142,723	517,041	58.5	57.2	43.4	53.0

SUBDIVISIONS AND STATISTICAL LOCAL AREAS, SOUTH AUSTRALIA, DECEMBER QUARTER 1994

<i>Guest nights</i>				<i>Guest arrivals</i>				<i>Takings from accommodation (\$'000)</i>			
<i>Oct.</i>	<i>Nov.</i>	<i>Dec.</i>	<i>Dec. qtr</i>	<i>Oct.</i>	<i>Nov.</i>	<i>Dec.</i>	<i>Dec. qtr</i>	<i>Oct.</i>	<i>Nov.</i>	<i>Dec.</i>	<i>Dec. qtr</i>
4,208	5,048	3,581	12,837	2,773	2,143	2,039	6,955	170	233	143	545
1,996	2,514	1,965	6,475	1,094	1,185	1,014	3,293	64	76	52	191
2,167	2,116	1,761	6,044	1,391	1,121	967	3,479	62	77	55	194
3,119	2,495	2,194	7,808	1,391	1,293	1,055	3,739	122	131	110	363
3,955	4,271	3,694	11,920	2,304	2,378	2,216	6,898	163	211	145	519
100,404	102,621	73,895	276,920	42,301	41,526	33,847	117,674	6,727	8,901	4,465	20,093
12,691	11,651	9,915	34,257	7,338	5,651	6,442	19,431	304	360	243	907
4,188	5,234	3,751	13,173	1,973	1,656	1,662	5,291	169	312	135	616
8,325	7,816	7,084	23,225	3,977	3,299	3,525	10,801	241	330	198	770
4,557	4,632	4,513	13,702	2,579	2,455	2,494	7,528	190	236	166	592
23,266	22,256	20,832	66,354	8,936	8,013	7,788	24,737	1,205	1,546	1,083	3,834
1,923	2,336	1,989	6,248	924	1,050	928	2,902	52	69	52	173
2,545	2,441	2,729	7,715	1,116	1,054	1,239	3,409	81	98	82	260
2,493	2,430	2,625	7,548	1,585	1,540	1,520	4,645	64	69	63	196
175,837	177,861	140,528	494,226	79,682	74,364	66,736	220,782	9,614	12,648	6,992	29,253
4,744	3,330	2,760	10,834	2,813	2,080	1,994	6,887	156	127	97	380
3,995	3,175	2,954	10,124	2,669	2,222	1,932	6,823	130	110	98	338
2,845	2,097	2,418	7,360	1,121	936	856	2,913	78	59	63	200
4,508	3,725	4,237	12,470	2,334	2,225	2,270	6,829	166	133	142	442
3,259	3,414	2,778	9,451	1,769	1,593	1,537	4,899	127	152	104	383
7,244	6,789	6,909	20,942	4,296	3,787	4,002	12,085	232	213	215	660
5,124	3,031	4,699	12,854	2,460	1,750	2,554	6,764	167	133	168	468
31,719	25,561	26,755	84,035	17,462	14,593	15,145	47,200	1,056	927	888	2,871
1,570	962	1,152	3,684	993	706	747	2,446	49	37	34	120
1,049	561	751	2,361	713	365	494	1,572	22	12	14	49
1,413	840	1,262	3,515	752	535	633	1,920	35	28	30	94
800	633	867	2,300	551	466	492	1,509	23	17	19	59
5,354	4,273	3,639	13,266	3,630	2,867	2,543	9,040	164	147	126	437
10,186	7,269	7,671	25,126	6,639	4,939	4,909	16,487	294	241	224	759
2,471	1,617	2,176	6,264	1,280	882	883	3,045	71	58	60	189
3,922	3,008	3,442	10,372	2,574	2,154	2,438	7,166	112	100	96	308
7,151	5,448	5,152	17,751	4,915	3,350	3,622	11,887	221	187	166	575
1,256	1,015	899	3,170	1,029	813	801	2,643	31	25	22	78
2,817	2,240	1,804	6,861	1,464	1,712	1,128	4,304	80	70	51	200
1,960	1,342	1,160	4,462	1,402	1,061	944	3,407	51	36	32	119
19,577	14,670	14,633	48,880	12,664	9,972	9,816	32,452	566	476	427	1,469
2,228	1,613	2,082	5,923	1,567	1,253	1,347	4,167	50	39	52	141
3,794	2,770	2,742	9,306	3,000	2,089	2,213	7,302	112	88	79	279
3,363	2,629	2,717	8,709	2,699	2,138	2,282	7,119	97	88	82	267
694	900	686	2,280	499	587	436	1,522	26	28	23	78
20,060	16,045	13,029	49,134	10,433	8,906	7,582	26,921	668	583	450	1,701
3,098	2,388	2,459	7,945	1,906	1,644	1,457	5,007	107	86	82	276
33,237	26,345	23,715	83,297	20,104	16,617	15,317	52,038	1,061	912	768	2,741
918	765	674	2,357	682	526	537	1,745	27	22	21	69
5,087	3,483	3,840	12,410	3,064	2,175	2,091	7,330	158	122	118	398
1,774	1,033	1,417	4,224	1,196	675	884	2,755	51	33	37	121
4,526	2,993	3,943	11,462	3,422	2,043	3,098	8,563	143	111	116	370
1,871	960	2,193	5,024	1,763	916	2,157	4,836	54	28	53	135
14,176	9,234	12,067	35,477	10,127	6,335	8,767	25,229	433	316	343	1,092
7,426	5,059	4,520	17,005	3,348	2,808	2,284	8,440	259	217	175	650
3,147	2,638	2,393	8,178	2,249	1,920	1,726	5,895	108	99	81	288
1,148	843	694	2,685	997	711	605	2,313	33	29	23	85
9,145	6,762	7,172	23,079	5,664	4,539	5,278	15,481	319	273	271	863
6,631	2,532	1,629	10,792	3,696	1,554	1,097	6,347	208	84	49	340
9,521	7,076	6,683	23,280	7,376	5,125	4,636	17,137	356	289	209	854
37,018	24,910	23,091	85,019	23,330	16,657	15,626	55,613	1,283	991	807	3,081
321,750	285,850	248,460	856,060	170,008	143,477	136,316	449,801	14,306	16,511	10,449	41,265

TABLE 8 — HOLIDAY FLATS, UNITS AND HOUSES: STATISTICAL DIVISIONS AND SELECTED SUBDIVISIONS, SOUTH AUSTRALIA

Particulars	Adelaide (SD)				Outer Adelaide (SD)		Total
	Western (SSD)	Eastern (SSD)	Southern (SSD)	Total	Kangaroo Island (SSD)	Barossa and Fleurieu (SSDs)	
LETTING ENTITIES, CAPACITY AND EMPLOYMENT							
December quarter 1993—							
Letting entities	11	13	14	38	8	9	17
Flats, units and houses							
Single bedroom	31	140	60	231	n.p.	n.p.	33
Multiple bedroom	89	116	172	377	n.p.	n.p.	358
Total flats, units and houses	120	256	232	608	n.p.	n.p.	391
Bed spaces	504	961	1,072	2,537	n.p.	n.p.	2,286
Employment (persons) (a)	28	74	62	164	n.p.	n.p.	28
December quarter 1994—							
Letting entities	11	12	14	37	10	9	19
Flats, units and houses							
Single bedroom	31	87	61	179	26	17	43
Multiple bedroom	87	113	171	371	42	329	371
Total flats, units and houses	118	200	232	550	68	346	414
Bed spaces	482	802	1,080	2,364	333	2,075	2,408
Employment (persons) (a)	27	50	61	138	21	13	34
UNIT NIGHTS OCCUPIED							
December quarter 1993	8,022	15,647	10,929	34,598	n.p.	n.p.	10,192
1994—							
October	2,091	3,919	3,957	9,967	1,058	2,814	3,872
November	1,681	4,313	3,634	9,628	925	2,116	3,041
December	1,771	3,408	3,792	8,971	1,037	3,790	4,827
December quarter 1994	5,543	11,640	11,383	28,566	3,020	8,720	11,740
UNIT OCCUPANCY RATES (per cent)							
December quarter 1993	72.7	66.4	52.2	62.3	n.p.	n.p.	28.3
1994—							
October	57.2	63.2	55.0	58.5	50.2	26.2	30.2
November	47.5	79.8	52.2	60.5	45.3	20.4	24.5
December	48.4	63.2	52.7	55.2	49.2	35.3	37.6
December quarter 1994	51.1	68.5	53.3	58.1	48.3	27.4	30.8
UNIT LETTINGS							
December quarter 1993	1,078	2,432	2,002	5,512	n.p.	n.p.	2,194
1994—							
October	398	587	762	1,747	348	583	931
November	353	577	729	1,659	306	449	755
December	349	490	710	1,549	302	632	934
December quarter 1994	1,100	1,654	2,201	4,955	956	1,664	2,620
AVERAGE LENGTH OF STAY (days)							
December quarter 1993	7.4	6.4	5.5	6.3	n.p.	n.p.	4.6
1994—							
October	5.3	6.7	5.2	5.7	3.0	4.8	4.2
November	4.8	7.5	5.0	5.8	3.0	4.7	4.0
December	5.1	7.0	5.3	5.8	3.4	6.0	5.2
December quarter 1994	5.0	7.0	5.2	5.8	3.2	5.2	4.5
TAKINGS FROM ACCOMMODATION (\$'000)							
December quarter 1993	584	1,130	770	2,483	n.p.	n.p.	448
1994—							
October	143	263	255	661	56	114	170
November	131	324	270	725	46	77	123
December	131	245	300	677	58	173	230
December quarter 1994	405	833	825	2,063	160	364	524

TABLE 8 — HOLIDAY FLATS, UNITS AND HOUSES: STATISTICAL DIVISIONS AND SELECTED SUBDIVISIONS,
SOUTH AUSTRALIA—continued

Particulars	Yorke and Lower North (SD)	Murray Lands and South East (SDs)	Eyre (SD)	Northern (SD)	South Australia
LETTING ENTITIES, CAPACITY AND EMPLOYMENT					
December quarter 1993—					
Letting entities	10	7	9	6	87
Flats, units and houses					
Single bedroom	43	22	23	8	360
Multiple bedroom	62	116	56	48	1,017
Total flats, units and houses	105	138	79	56	1,377
Bed spaces	536	821	379	306	6,865
Employment (persons)(a)	26	10	18	20	266
December quarter 1994—					
Letting entities	11	8	9	6	90
Flats, units and houses					
Single bedroom	44	21	23	8	318
Multiple bedroom	64	131	57	48	1,042
Total flats, units and houses	108	152	80	56	1,360
Bed spaces	536	909	385	298	6,900
Employment (persons)(a)	25	10	18	19	244
UNIT NIGHTS OCCUPIED					
December quarter 1993	2,854	1,826	1,988	1,105	52,563
1994—					
October	1,496	551	897	1,038	17,821
November	852	398	532	412	14,863
December	836	1,118	753	327	16,832
December quarter 1994	3,184	2,067	2,182	1,777	49,516
UNIT OCCUPANCY RATES (per cent)					
December quarter 1993	29.5	14.4	27.4	21.4	41.6
1994—					
October	44.7	11.7	36.2	59.8	42.3
November	26.3	8.7	22.2	24.5	37.0
December	25.0	23.7	30.4	18.8	40.7
December quarter 1994	32.0	14.8	29.6	34.5	40.0
UNIT LETTINGS					
December quarter 1993	1,232	459	459	519	10,375
1994—					
October	611	140	207	366	4,002
November	322	99	163	153	3,151
December	285	216	176	113	3,273
December quarter 1994	1,218	455	546	632	10,426
AVERAGE LENGTH OF STAY (days)					
December quarter 1993	2.3	4.0	4.3	2.1	5.1
1994—					
October	2.4	3.9	4.3	2.8	4.5
November	2.6	4.0	3.3	2.7	4.7
December	2.9	5.2	4.3	2.9	5.1
December quarter 1994	2.6	4.5	4.0	2.8	4.7
TAKINGS FROM ACCOMMODATION (\$'000)					
December quarter 1993	118	83	89	64	3,290
1994—					
October	58	24	40	60	1,015
November	30	19	25	20	942
December	28	57	36	14	1,043
December quarter 1994	116	100	102	95	3,000

(a) Employment numbers exclude real estate agents and their employees.

TABLE 9 — CARAVAN PARKS BY STATISTICAL DIVISION, SOUTH AUSTRALIA

Particulars	Adelaide (SD)			Outer Adelaide (SD)			Yorke and Lower North (SD)	Murray Lands (SD)		
	Short-term	Long-term	Total	Short-term	Long-term	Total	Total	Short-term	Long-term	Total
ESTABLISHMENTS, CAPACITY AND EMPLOYMENT										
<i>December quarter 1993—</i>										
Establishments	12	14	26	22	7	29	36	25	9	34
Capacity										
On-site vans	210	51	261	122	39	161	124	125	82	207
Other powered sites	1,155	1,491	2,646	2,215	415	2,630	2,463	1,589	397	1,986
Unpowered sites	276	134	410	1,050	381	1,431	509	805	168	973
Cabins, flats, etc.	194	175	369	199	32	231	163	177	62	239
<i>Total capacity</i>	<i>1,835</i>	<i>1,851</i>	<i>3,686</i>	<i>3,586</i>	<i>867</i>	<i>4,453</i>	<i>3,259</i>	<i>2,696</i>	<i>709</i>	<i>3,405</i>
Sites occupied by long-term guests	126	937	1,063	129	122	251	113	88	124	212
Other sites permanently reserved	23	8	31	527	2	529	594	233	14	247
Employment (persons)	93	67	160	84	17	101	107	67	29	96
<i>December quarter 1994—</i>										
Establishments	12	14	26	23	7	30	36	27	7	34
Capacity										
On-site vans	161	93	254	126	34	160	116	128	60	188
Other powered sites	1,030	1,502	2,532	2,236	380	2,616	2,467	1,743	277	2,020
Unpowered sites	268	141	409	1,140	281	1,421	507	896	79	975
Cabins, flats, etc.	219	175	394	205	32	237	178	205	46	251
<i>Total capacity</i>	<i>1,678</i>	<i>1,911</i>	<i>3,589</i>	<i>3,707</i>	<i>727</i>	<i>4,434</i>	<i>3,268</i>	<i>2,972</i>	<i>462</i>	<i>3,434</i>
Sites occupied by long-term guests	131	987	1,118	136	112	248	122	149	103	252
Other sites permanently reserved	23	6	29	550	6	556	602	268	6	274
Employment (persons)	78	66	144	82	16	98	98	75	21	96
SITE NIGHTS OCCUPIED										
<i>December quarter 1993</i>	<i>68,258</i>	<i>98,691</i>	<i>166,949</i>	<i>93,011</i>	<i>13,660</i>	<i>106,671</i>	<i>112,162</i>	<i>51,097</i>	<i>18,204</i>	<i>69,301</i>
<i>1994—</i>										
October	21,631	32,915	54,546	34,016	5,191	39,207	37,916	20,874	5,005	25,879
November	22,211	32,991	55,202	31,396	4,794	36,190	30,941	18,003	4,324	22,327
December	24,348	36,214	60,562	40,643	4,907	45,550	39,334	21,526	4,559	26,085
<i>December quarter 1994</i>	<i>68,190</i>	<i>102,120</i>	<i>170,310</i>	<i>106,055</i>	<i>14,892</i>	<i>120,947</i>	<i>108,191</i>	<i>60,403</i>	<i>13,888</i>	<i>74,291</i>
SITE OCCUPANCY RATES (per cent)										
<i>December quarter 1993</i>	<i>40.4</i>	<i>58.0</i>	<i>49.2</i>	<i>28.2</i>	<i>17.1</i>	<i>26.0</i>	<i>37.4</i>	<i>20.7</i>	<i>27.9</i>	<i>22.2</i>
<i>1994—</i>										
October	41.6	55.6	49.0	29.6	23.0	28.5	37.4	22.7	34.9	24.3
November	44.1	57.5	51.3	28.2	22.0	27.2	31.6	20.2	31.2	21.7
December	46.8	61.1	54.4	35.4	21.8	33.1	38.8	23.4	31.8	24.5
<i>December quarter 1994</i>	<i>44.2</i>	<i>58.1</i>	<i>51.6</i>	<i>31.1</i>	<i>22.3</i>	<i>29.6</i>	<i>36.0</i>	<i>22.1</i>	<i>32.7</i>	<i>23.5</i>
TAKINGS FROM ACCOMMODATION (\$'000)										
<i>December quarter 1993</i>	<i>1,500</i>	<i>838</i>	<i>2,337</i>	<i>924</i>	<i>185</i>	<i>1,108</i>	<i>862</i>	<i>527</i>	<i>217</i>	<i>744</i>
<i>1994—</i>										
October	443	277	721	338	66	403	342	228	54	283
November	477	278	756	266	65	331	211	153	49	202
December	518	343	861	424	64	488	339	252	52	305
<i>December quarter 1994</i>	<i>1,438</i>	<i>899</i>	<i>2,337</i>	<i>1,027</i>	<i>195</i>	<i>1,223</i>	<i>892</i>	<i>634</i>	<i>156</i>	<i>790</i>

TABLE 9 — CARAVAN PARKS BY STATISTICAL DIVISION, SOUTH AUSTRALIA—continued

Particulars	South East (SD)			Eyre (SD)	Northern (SD)	South Australia		
	Short-term	Long-term	Total	Total	Total	Short-term	Long-term	Total
ESTABLISHMENTS, CAPACITY AND EMPLOYMENT								
<i>December quarter 1993—</i>								
Establishments	18	6	24	23	39	167	44	211
Capacity								
On-site vans	102	52	154	91	193	939	252	1,191
Other powered sites	1,536	201	1,737	1,546	1,822	11,994	2,836	14,830
Unpowered sites	627	135	762	858	1,839	5,736	1,046	6,782
Cabins, flats, etc.	130	85	215	185	243	1,256	389	1,645
<i>Total capacity</i>	<i>2,395</i>	<i>473</i>	<i>2,868</i>	<i>2,680</i>	<i>4,097</i>	<i>19,925</i>	<i>4,523</i>	<i>24,448</i>
Sites occupied by long-term guests	17	66	83	54	173	585	1,364	1,949
Other sites permanently reserved	19	—	19	43	33	1,467	29	1,496
Employment (persons)	73	25	98	78	109	593	156	749
<i>December quarter 1994—</i>								
Establishments	19	6	25	24	40	172	43	215
Capacity								
On-site vans	91	60	151	94	199	890	272	1,162
Other powered sites	1,537	232	1,769	1,578	1,811	12,062	2,731	14,793
Unpowered sites	413	154	567	894	1,867	5,757	883	6,640
Cabins, flats, etc.	191	45	236	195	255	1,417	329	1,746
<i>Total capacity</i>	<i>2,232</i>	<i>491</i>	<i>2,723</i>	<i>2,761</i>	<i>4,132</i>	<i>20,126</i>	<i>4,215</i>	<i>24,341</i>
Sites occupied by long-term guests	34	49	83	75	205	708	1,395	2,103
Other sites permanently reserved	29	—	29	50	27	1,547	20	1,567
Employment (persons)	89	23	112	88	129	621	144	765
SITE NIGHTS OCCUPIED								
<i>December quarter 1993</i>	<i>24,887</i>	<i>11,546</i>	<i>36,433</i>	<i>37,811</i>	<i>53,365</i>	<i>427,273</i>	<i>155,419</i>	<i>582,692</i>
<i>1994—</i>								
October	9,661	3,071	12,732	15,234	25,347	158,985	51,876	210,861
November	6,999	2,595	9,594	11,520	15,321	131,077	50,018	181,095
December	15,665	2,853	18,518	13,580	14,639	164,385	53,883	218,268
<i>December quarter 1994</i>	<i>32,325</i>	<i>8,519</i>	<i>40,844</i>	<i>40,334</i>	<i>55,307</i>	<i>454,447</i>	<i>155,777</i>	<i>610,224</i>
SITE OCCUPANCY RATES (per cent)								
<i>December quarter 1993</i>	<i>11.3</i>	<i>26.5</i>	<i>13.8</i>	<i>15.3</i>	<i>14.3</i>	<i>23.4</i>	<i>37.3</i>	<i>26.0</i>
<i>1994—</i>								
October	14.0	20.2	15.1	17.8	19.8	25.5	39.7	27.9
November	10.5	17.6	11.7	13.9	12.4	21.7	39.6	24.8
December	22.6	18.7	21.9	15.9	11.4	26.3	41.2	28.9
<i>December quarter 1994</i>	<i>15.7</i>	<i>18.9</i>	<i>16.3</i>	<i>15.9</i>	<i>14.5</i>	<i>24.5</i>	<i>40.2</i>	<i>27.2</i>
TAKINGS FROM ACCOMMODATION (\$'000)								
<i>December quarter 1993</i>	<i>469</i>	<i>189</i>	<i>658</i>	<i>514</i>	<i>695</i>	<i>5,370</i>	<i>1,549</i>	<i>6,918</i>
<i>1994—</i>								
October	177	45	222	211	350	2,038	495	2,533
November	126	34	160	156	185	1,529	471	2,000
December	254	44	298	196	177	2,114	549	2,664
<i>December quarter 1994</i>	<i>557</i>	<i>123</i>	<i>680</i>	<i>564</i>	<i>712</i>	<i>5,681</i>	<i>1,516</i>	<i>7,197</i>

TABLE 10 — CARAVAN PARKS: STATISTICAL DIVISIONS AND SELECTED SUBDIVISIONS

Statistical Divisions and Selected Subdivisions and Statistical Local Areas	Capacity					Total	Sites occupied by long-term guests	Other sites permanently reserved	Employment (persons)
	Establishments	On-site vans	Other powered sites	Unpowered sites	Cabins, flats, etc.				
Northern (SSD)	7	27	880	70	74	1,051	637	—	36
Western and Eastern (SSDs)	5	98	497	163	162	920	58	—	48
Noarlunga (C)	5	28	430	31	97	586	270	6	20
Willunga (DC)	4	65	336	79	14	494	36	16	17
Southern (SSD) — Balance	5	36	389	66	47	538	117	7	23
<i>Adelaide (SD)</i>	26	254	2,532	409	394	3,589	1,118	29	144
Barossa (SSD)	8	44	676	625	49	1,394	82	14	29
Kangaroo Island (SSD)	5	28	101	77	19	225	1	1	11
Port Elliot and Goolwa (DC)	5	37	546	157	70	810	35	123	17
Yankalilla (DC)	4	7	409	145	33	594	17	203	12
Fleurieu (SSD) — Balance and Onkaparinga (SSD)	8	44	884	417	66	1,411	113	215	29
<i>Outer Adelaide (SD)</i>	30	160	2,616	1,421	237	4,434	248	556	98
Central Yorke Peninsula (DC)	7	25	415	55	26	521	29	258	20
Minlaton (DC)	4	12	295	56	16	379	6	51	12
Yorke town (DC)	5	23	499	96	17	635	27	94	7
Yorke (SSD) — Balance	11	45	953	94	83	1,175	36	173	41
Lower North (SSD)	9	11	305	206	36	558	24	26	18
<i>Yorke and Lower North (SD)</i>	36	116	2,467	507	178	3,268	122	602	98
Riverland (SSD)	13	127	1,098	477	138	1,840	183	72	52
Meningie (DC)	6	17	275	246	41	579	7	4	16
Murray Bridge (RC)	6	35	228	109	39	411	40	38	15
Murray Mallee (SSD) — Balance	9	9	419	143	33	604	22	160	13
<i>Murray Lands (SD)</i>	34	188	2,020	975	251	3,434	252	274	96
Robe (DC)	3	8	333	96	40	477	1	—	25
Upper South East (SSD) — Balance	7	45	325	189	13	572	17	13	30
Mount Gambier (C)	3	42	365	15	72	494	19	—	21
Lower South East (SSD) — Balance	12	56	746	267	111	1,180	46	16	36
<i>South East (SD)</i>	25	151	1,769	567	236	2,723	83	29	112
Lincoln (SSD)	15	71	1,035	505	107	1,718	67	47	51
West Coast (SSD)	9	23	543	389	88	1,043	8	3	37
<i>Eyre (SD)</i>	24	94	1,578	894	195	2,761	75	50	38
Pirie (SSD)	10	44	335	230	23	632	38	5	22
Mount Remarkable (DC)	5	14	185	230	21	450	2	5	8
Port Augusta (C)	3	33	242	160	64	499	38	6	20
Unincorporated Flinders Ranges	5	10	105	273	10	398	2	—	11
Flinders Ranges (SSD) — Balance	4	35	237	170	27	469	4	3	12
Unincorporated Far North	7	10	173	466	51	700	—	—	36
Far North (SSD) — Balance and Whyalla (SSD)	6	53	534	338	59	984	121	8	20
<i>Northern (SD)</i>	40	199	1,811	1,867	255	4,132	205	27	129
<i>South Australia</i>									
Short-term parks	172	890	12,062	5,757	1,417	20,126	708	1,547	621
Long-term parks	43	272	2,731	883	329	4,215	1,395	20	144
<i>Total</i>	215	1,162	14,793	6,640	1,746	24,341	2,103	1,567	765

AND STATISTICAL LOCAL AREAS, SOUTH AUSTRALIA, DECEMBER QUARTER 1994

<i>Site nights occupied</i>				<i>Site occupancy rates (per cent)</i>				<i>Takings from accommodation (\$'000)</i>			
<i>Oct.</i>	<i>Nov.</i>	<i>Dec.</i>	<i>Dec. qtr</i>	<i>Oct.</i>	<i>Nov.</i>	<i>Dec.</i>	<i>Dec. qtr</i>	<i>Oct.</i>	<i>Nov.</i>	<i>Dec.</i>	<i>Dec. qtr</i>
21,146	21,184	22,857	65,187	64.9	67.2	70.2	67.4	166	170	189	525
14,333	14,248	15,700	44,281	50.3	51.6	55.0	52.3	323	346	370	1,039
8,844	9,106	10,228	28,178	48.7	51.8	56.3	52.3	81	81	116	278
2,625	2,352	3,246	8,223	17.1	15.9	21.2	18.1	34	30	54	119
7,598	8,312	8,531	24,441	45.6	51.5	51.2	49.4	117	129	131	377
<i>54,546</i>	<i>55,202</i>	<i>60,562</i>	<i>170,310</i>	<i>49.0</i>	<i>51.3</i>	<i>54.4</i>	<i>51.6</i>	<i>721</i>	<i>756</i>	<i>861</i>	<i>2,337</i>
5,697	4,554	4,720	14,971	13.2	10.9	10.9	11.7	78	64	74	216
1,013	1,197	2,221	4,431	14.5	17.7	31.8	21.4	21	20	37	78
6,844	5,906	9,267	22,017	27.3	24.3	36.9	29.5	58	49	113	219
8,670	8,385	10,098	27,153	47.1	47.1	54.8	49.7	88	64	80	231
16,983	16,148	19,244	52,375	38.8	38.1	44.0	40.3	159	134	185	478
<i>39,207</i>	<i>36,190</i>	<i>45,550</i>	<i>120,947</i>	<i>28.5</i>	<i>27.2</i>	<i>33.1</i>	<i>29.6</i>	<i>403</i>	<i>331</i>	<i>488</i>	<i>1,223</i>
12,233	10,456	12,438	35,127	75.7	66.9	77.0	73.3	58	35	63	157
2,827	2,254	3,155	8,236	24.1	19.8	26.9	23.6	21	11	26	58
6,350	5,817	7,525	19,692	32.3	30.5	38.2	33.7	51	32	60	143
12,040	9,164	12,933	34,137	33.1	26.0	35.5	31.6	161	102	162	425
4,466	3,250	3,283	10,999	25.8	19.4	19.0	21.4	52	30	28	110
<i>37,916</i>	<i>30,941</i>	<i>39,334</i>	<i>108,191</i>	<i>37.4</i>	<i>31.6</i>	<i>38.8</i>	<i>36.0</i>	<i>342</i>	<i>211</i>	<i>339</i>	<i>892</i>
14,001	10,804	14,457	39,262	24.5	19.6	25.3	23.2	184	130	210	524
1,375	1,017	1,521	3,913	7.7	5.9	8.5	7.3	24	18	27	68
3,166	2,852	3,344	9,362	24.8	23.1	26.2	24.8	32	25	34	90
7,337	7,654	6,763	21,754	39.2	42.2	36.1	39.1	43	29	34	107
25,879	22,327	26,085	74,291	24.3	21.7	24.5	23.5	283	202	305	790
769	545	2,492	3,806	5.2	3.8	16.9	8.7	20	17	62	99
2,598	2,178	3,175	7,951	14.7	12.7	17.9	15.1	34	28	45	107
3,962	2,804	3,476	10,242	25.9	18.9	22.7	22.5	82	54	76	212
5,403	4,067	9,375	18,845	14.8	11.5	25.6	17.4	86	61	116	262
<i>12,732</i>	<i>9,594</i>	<i>18,518</i>	<i>40,844</i>	<i>15.1</i>	<i>11.7</i>	<i>21.9</i>	<i>16.3</i>	<i>222</i>	<i>160</i>	<i>298</i>	<i>680</i>
9,397	7,389	9,163	25,949	17.6	14.3	17.2	16.4	116	85	112	314
5,837	4,131	4,417	14,385	18.1	13.2	13.7	15.0	95	71	84	250
<i>15,234</i>	<i>11,520</i>	<i>13,580</i>	<i>40,334</i>	<i>17.8</i>	<i>13.9</i>	<i>15.9</i>	<i>15.9</i>	<i>211</i>	<i>156</i>	<i>196</i>	<i>564</i>
2,799	1,964	2,069	6,832	14.3	10.4	10.6	11.8	38	21	25	84
1,998	779	597	3,374	14.3	5.8	4.3	8.1	31	10	7	48
5,302	3,709	3,868	12,879	34.3	24.8	25.0	28.1	77	51	53	180
1,354	326	219	1,899	11.0	2.7	1.8	5.2	12	3	2	17
4,034	1,165	596	5,795	27.7	8.3	4.1	13.4	85	28	15	128
2,171	1,037	957	4,165	10.0	4.9	4.4	6.5	25	13	12	50
7,689	6,341	6,333	20,363	25.2	21.5	20.8	22.5	82	60	64	206
<i>25,347</i>	<i>15,321</i>	<i>14,639</i>	<i>55,307</i>	<i>19.8</i>	<i>12.4</i>	<i>11.4</i>	<i>14.5</i>	<i>350</i>	<i>185</i>	<i>177</i>	<i>712</i>
158,985	131,077	164,385	454,447	25.5	21.7	26.3	24.5	2,038	1,529	2,114	5,681
51,876	50,018	53,883	155,777	39.7	39.6	41.2	40.2	495	471	549	1,516
<i>210,861</i>	<i>181,095</i>	<i>218,268</i>	<i>610,224</i>	<i>27.9</i>	<i>24.8</i>	<i>28.9</i>	<i>27.2</i>	<i>2,533</i>	<i>2,000</i>	<i>2,664</i>	<i>7,197</i>

TABLE 11 — VISITOR HOSTELS BY STATISTICAL DIVISION, SOUTH AUSTRALIA

<i>Particulars</i>	<i>Adelaide (SD)</i>	<i>Outer Adelaide (SD)</i>	<i>Northern (SD)</i>	<i>Balance of State</i>	<i>South Australia</i>
ESTABLISHMENTS, CAPACITY AND EMPLOYMENT					
<i>December quarter 1993—</i>					
Establishments	17	7	10	8	42
Bed spaces	869	192	741	235	2,037
Employment (persons)	56	25	27	15	123
<i>December quarter 1994—</i>					
Establishments	17	9	9	7	42
Bed spaces	915	248	695	217	2,075
Employment (persons)	65	24	34	13	136
GUEST NIGHTS					
<i>December quarter 1993</i>	<i>41,740</i>	<i>4,428</i>	<i>7,812</i>	<i>5,316</i>	<i>59,296</i>
<i>1994—</i>					
October	11,190	1,571	4,274	1,628	18,663
November	14,832	1,604	2,733	2,059	21,228
December	14,166	1,864	2,456	2,251	20,737
<i>December quarter 1994</i>	<i>40,188</i>	<i>5,039</i>	<i>9,463</i>	<i>5,938</i>	<i>60,628</i>
BED OCCUPANCY RATES (per cent)					
<i>December quarter 1993</i>	<i>52.2</i>	<i>25.1</i>	<i>11.5</i>	<i>24.6</i>	<i>31.6</i>
<i>1994—</i>					
October	40.4	20.4	19.8	24.2	29.3
November	55.3	21.6	13.1	31.6	34.4
December	50.5	24.2	11.4	33.5	32.4
<i>December quarter 1994</i>	<i>48.7</i>	<i>22.1</i>	<i>14.8</i>	<i>29.7</i>	<i>32.0</i>
GUEST ARRIVALS					
<i>December quarter 1993</i>	<i>14,585</i>	<i>3,268</i>	<i>7,493</i>	<i>2,282</i>	<i>27,628</i>
<i>1994—</i>					
October	3,753	1,233	3,804	729	9,519
November	4,809	1,247	2,548	853	9,457
December	5,162	1,286	2,314	849	9,611
<i>December quarter 1994</i>	<i>13,724</i>	<i>3,766</i>	<i>8,666</i>	<i>2,431</i>	<i>28,587</i>
AVERAGE LENGTH OF STAY (days)					
<i>December quarter 1993</i>	<i>2.9</i>	<i>1.4</i>	<i>1.0</i>	<i>2.3</i>	<i>2.1</i>
<i>1994—</i>					
October	3.0	1.3	1.1	2.2	2.0
November	3.1	1.3	1.1	2.4	2.2
December	2.7	1.4	1.1	2.7	2.2
<i>December quarter 1994</i>	<i>2.9</i>	<i>1.3</i>	<i>1.1</i>	<i>2.4</i>	<i>2.1</i>
TAKINGS FROM ACCOMMODATION (\$'000)					
<i>December quarter 1993</i>	<i>495</i>	<i>44</i>	<i>58</i>	<i>41</i>	<i>638</i>
<i>1994—</i>					
October	125	16	28	11	180
November	179	14	19	17	229
December	161	17	18	17	213
<i>December quarter 1994</i>	<i>465</i>	<i>47</i>	<i>64</i>	<i>45</i>	<i>622</i>

EXPLANATORY NOTES

INTRODUCTION

1 This publication contains data for South Australia from a quarterly survey of tourist accommodation establishments. The period covered by the latest survey is the 3 months ended 31 December 1994.

SCOPE

2 Tourist accommodation establishments currently included in the survey comprise two groups:

- Establishments which provide predominantly short-term accommodation (i.e. for periods of less than 2 months) to the general public. These include:

Hotels, motels and guest houses, with facilities being hotels licensed to operate a public bar and motels, private hotels and guest houses all of which provide a bath (or shower) and toilet in most guest rooms and have breakfast available for guests.

NOTE: From December quarter 1993, hotel, motel and guest house establishments with fewer than five rooms have been formally excluded from the scope of this statistical collection. This change in scope resulted in the exclusion of 16 establishments which in the September quarter 1993 Survey aggregates for South Australia represented 4.5 per cent of hotel, motel and guest house establishments but accounted for less than 0.6 per cent of accommodation capacity, occupancy and takings respectively.

Holiday flats, units and houses (excluding establishments predominantly operated on a time share basis) which are operated by owners or managers who have sole letting rights to at least five flats, units or houses or by real estate agents for short-term letting. They are mainly self-contained in terms of cooking, bath (or shower) and toilet facilities and do not have breakfast available for guests. Data for holiday flats, units and houses include short-term owner occupation as well as paying guest occupation.

Visitor hostels which provide accommodation to visitors on a bed basis (rather than by the room). This category does not include establishments providing charity type accommodation (e.g. Salvation Army hostels) nor hotels, motels and guest houses without in-room facilities which provide accommodation on a per room basis.

- *Caravan parks* which provide either predominantly short-term (i.e. for periods of less than 2 months) or predominantly long-term (i.e. for periods of 2 months or more) accommodation to the general public and which provide powered sites for caravans and toilet, shower and laundry facilities for guests.

3 Data collected and published for each type of establishment (other than holiday flats, units and houses) include both long-term and short-term guests at these establishments.

4 Establishments which provide more than one type of accommodation (e.g. a motel with attached caravan park) are treated as two or more separate establishments. However, self-contained units, flats, cabins, etc. attached to hotels, motels or to caravan parks are included in the capacity for those establishments and not treated as separate holiday flat, unit or house establishments.

DEFINITIONS

5 *Number of establishments.* For hotels, motels and guest houses, caravan parks and visitor hostels, the number of establishments within the scope of the survey which operated for any part of the survey period, or which closed temporarily for the quarter for seasonal reasons.

6 *Number of letting entities.* For holiday flats, units and houses, the number of owners, managers or real estate agents within the scope of the survey who operated for any part of the survey period.

7 Capacity in terms of *Guest rooms, Bed spaces, Holiday units or Caravan park sites, etc.* is the maximum number available to accommodate paying guests during the survey period. Capacity closed temporarily for seasonal reasons is included.

8 *Bed spaces.* Three-quarter beds are counted as one bed space; double beds as two bed spaces. Cots are excluded.

9 *Total caravan park capacity* comprises *On-site vans, Other powered sites, Unpowered sites and Cabins, etc.*

EXPLANATORY NOTES —continued

DEFINITIONS —continued

10 *Room nights available.* The number of guest rooms available multiplied by the number of days for which they were available during the survey period. Includes operating periods only for establishments closing (other than for seasonal reasons) or opening during the survey period.

11 Occupancy in terms of *Room nights*, *Unit nights* or *Site nights occupied* refers to the total number of nights each guest room, holiday unit or caravan park site, etc. was occupied during the survey period.

NOTE: From September quarter 1992, caravan park sites, etc. permanently reserved for 2 months or more at the end of the survey period but only casually occupied by their tenants have been recorded continuously as *Site nights occupied* irrespective of whether the tenants of individual sites were in residence on any particular night. (See also paragraph 14 below). Previously, usage of these sites was recorded as *Site nights occupied* only when their tenants were in the park. Total site occupancy rates from September quarter 1992 are therefore not comparable with those from previous quarters.

12 Occupancy in terms of *Guest nights* refers to the total number of nights each paying guest stayed during the survey period.

13 *Sites occupied by long-term guests.* The total number of sites, etc. occupied at the end of the survey period by guests who have stayed continuously for 2 months or more.

14 *Other sites permanently reserved.* The total number of powered and unpowered sites, on-site vans and cabins, etc. continuously let for 2 months or more by the end of the survey period to tenants who occupy the sites only on a casual or sporadic basis. Separate data for this item are available only from September quarter 1992.

15 *Occupancy rates* represent occupancy expressed as a percentage of total capacity available during the survey period — e.g.

$$\text{Room occupancy rate (\%)} \text{ for the period} = \frac{\text{Room nights occupied}}{(\text{Guest rooms}) \times (\text{No. of days in the period})} \times 100$$

providing that, for establishments closing (other than for seasonal reasons) or opening during the period, the denominator of the above expression includes only operating periods.

16 *Guest arrivals.* The total number of paying guests counted only on the first night they stayed at the accommodation establishment.

17 *Unit lettings.* The total number of times a holiday flat, unit or house was occupied by a new tenant, counted only on the first night it was occupied by the new tenant.

18 *Average length of stay* is expressed in number of days and calculated:

- for hotels, motels and guest houses and for visitor hostels, by dividing *Guest nights* by *Guest arrivals* and
- for holiday flats, units and houses, by dividing *Unit nights occupied* by *Unit lettings*.

19 *Takings from accommodation.* Revenue received from the provision of accommodation. Takings from meals are excluded. Takings from accommodation for each month generally represent the takings received during that month. Where payments are received in advance of, or after, the provision of accommodation to guests, the monthly figure for takings from accommodation may not necessarily bear a direct relationship to the number of guests accommodated during the month. Rental and storage fees paid to caravan parks for the keeping of private vans in parks are included in the takings of the month they are received.

20 *Star grading.* The grading of hotels and motels with facilities based on the classification system used by members of the Australian Automobile Association (AAA). The gradings are allocated according to a points system based on the amenities and facilities available to guests. Details of the grading scheme are contained in the RACV-RAASA members' publication *Accommodation Australia*, or the individual tour guides produced by members of the AAA. For the purpose of classifying establishments to a star

EXPLANATORY NOTES—continued

grading in this publication, 'half' star gradings are ignored (e.g. a two and a half star grading has been shown as two star).

21 *Employment.* The number of persons working at accommodation establishments at the end of the survey period (including working proprietors and those working on other than accommodation activities).

AUSTRALIAN STANDARD
GEOGRAPHICAL
CLASSIFICATION

22 Statistics presented in this publication have been classified according to the Australian Standard Geographical Classification (ASGC), Edition 2.4. This classification incorporates a number of hierarchic structures of geographic areas. The appropriate spatial units of the main structure of the ASGC used in this publication are shown in the appendix and are defined as follows.

Statistical Local Areas (SLAs) are legal local government areas or equivalent spatial units which serve as the smallest type of spatial unit considered appropriate for the presentation of statistics. In aggregate, SLAs cover the whole of the State without gaps or overlaps.

Statistical Subdivisions (SSDs). These consist of one or more SLAs and form the intermediate size spatial unit for the presentation of regional data.

Statistical Divisions (SDs). These consist of one or more SSDs. The divisions are designed to be relatively homogeneous regions characterised by identifiable social and economic units within the region, under the unifying influence of one or more major towns or cities. For more detailed information, refer to the ASGC (1216.0).

UNPUBLISHED STATISTICS

23 The ABS may make available on request certain unpublished tourist accommodation statistics. A charge may be made for this information.

RELATED PUBLICATIONS

24 Publications for Australia, and each State and Territory, are released by the respective offices of the ABS. Tourist accommodation statistics for past quarters are available on request.

25 Other ABS publications which may be of interest include:

Directory of Tourism Statistics (1130.0) (irregular: first and latest issue; 1991)

Overseas Arrivals and Departures, Australia (3401.0) (monthly)

Tourism Indicators Australia (8634.0) (quarterly)

Tourist Accommodation, Australia (8635.0) (quarterly)

26 Current publications produced by the ABS are listed in the *Catalogue of Publications and Products* (1101.0). The ABS also issues the *Publications Advice* (1105.0) on Tuesdays and Fridays which lists publications to be released in the next few days. Both the *Catalogue* and *Publications Advice* are available from any ABS office.

SYMBOLS AND
OTHER USAGES

n.a. not available

n.p. not available for publication but included in totals where applicable

r figure or series revised since previous issue

.. not applicable

— nil or rounded to zero

(C) Municipality with city status

(DC) District council

(M) Municipality

(RC) Rural City

27 Where figures have been rounded, discrepancies may occur between totals and the sums of the component items.

P. M. GARDNER
Deputy Commonwealth Statistician
and Government Statist

APPENDIX

STATISTICAL DIVISIONS, STATISTICAL SUB DIVISIONS AND STATISTICAL LOCAL AREAS,
SOUTH AUSTRALIA

ADELAIDE

Northern

Elizabeth (C)
 Enfield (C) – Pt A
 Gawler (M)
 Munno Para (C)
 Salisbury (C)
 Tea Tree Gully (C)

Western

Enfield (C) – Pt B
 Henley & Grange (C)
 Hindmarsh & Woodville (C)
 Port Adelaide (C)
 Thebarton (M)
 West Torrens (C)
 Unincorporated Western

Eastern

Adelaide (C)
 Buraside (C)
 Campbelltown (C)
 East Torrens (DC)
 Kensington & Norwood (C)
 Payneham (C)
 Prospect (C)
 St Peters (M)
 Stirling (DC)
 Unley (C)
 Walkerville (M)

Southern

Brighton (C)
 Glenside (C)
 Happy Valley (C)
 Marion (C)
 Mitcham (C)
 Noarlunga (C)
 Willunga (DC)

OUTER ADELAIDE

Barossa

Angaston (DC)
 Barossa (DC)
 Gumeracha (DC)
 Kapunda (DC)
 Light (DC)
 Mallala (DC)
 Mount Pleasant (DC)
 Tanunda (DC)

Kangaroo Island

Dudley (DC)
 Kingscote (DC)

Onkaparinga

Mount Barker (DC)
 Onkaparinga (DC)

Fleurieu

Port Elliot & Goolwa (DC)
 Strathalbyn (DC)
 Victor Harbor (DC)
 Yankalilla (DC)

YORKE AND LOWER NORTH

Yorke

Bute (DC)
 Central Yorke Peninsula (DC)
 Minlaton (DC)
 Northern Yorke Peninsula (DC)
 Port Broughton (DC)
 Wallaroo (M)
 Warooka (DC)
 Yorketown (DC)
 Unincorporated Yorke

Lower North

Blyth-Snowtown (DC)
 Burra Burra (DC)
 Clare (DC)
 Endunda (DC)
 Riverton (DC)
 Robertstown (DC)
 Saddleworth & Auburn (DC)
 Spalding (DC)
 Wakefield Plains (DC)

MURRAY LANDS*Riverland*

Barnera (DC)
 Berri (DC)
 Browns Well (DC)
 Loxton (DC)
 Morgan (DC)
 Paringa (DC)
 Renmark (M)
 Waikerie (DC)
 Unincorporated Riverland

Murray Mallee

Coonalpyn Downs (DC)
 Karoonda-East Murray (DC)
 Lameroo (DC)
 Mannum (DC)
 Meningie (DC)
 Murray Bridge (RC)
 Peake (DC)
 Pinnaroo (DC)
 Ridley-Truro (DC)
 Unincorporated Murray Mallee

SOUTH EAST*Upper South East*

Lacepede (DC)
 Lucindale (DC)
 Naracoorte (M)
 Naracoorte (DC)
 Robe (DC)
 Tatiara (DC)

Lower South East

Beachport (DC)
 Millicent (DC)
 Mount Gambier (C)
 Mount Gambier (DC)
 Penola (DC)
 Port MacDonnell (DC)

EYRE*Lincoln*

Cleve (DC)
 Elliston (DC)
 Franklin Harbor (DC)
 Kimba (DC)
 Le Hunte (DC)
 Lower Eyre Peninsula (DC)
 Port Lincoln (C)
 Tumby Bay (DC)
 Unincorporated Lincoln

West Coast

Murat Bay (DC)
 Streaky Bay (DC)
 Unincorporated West Coast

NORTHERN*Whyalla*

Whyalla (C)
 Unincorporated Whyalla

Pirie

Crystal Brook-Redhill (DC)
 Hallett (DC)
 Jamestown (DC)
 Orroroo (DC)
 Peterborough (M)
 Peterborough (DC)
 Pirie (DC)
 Port Pirie (C)
 Rocky River (DC)
 Unincorporated Pirie

Flinders Ranges

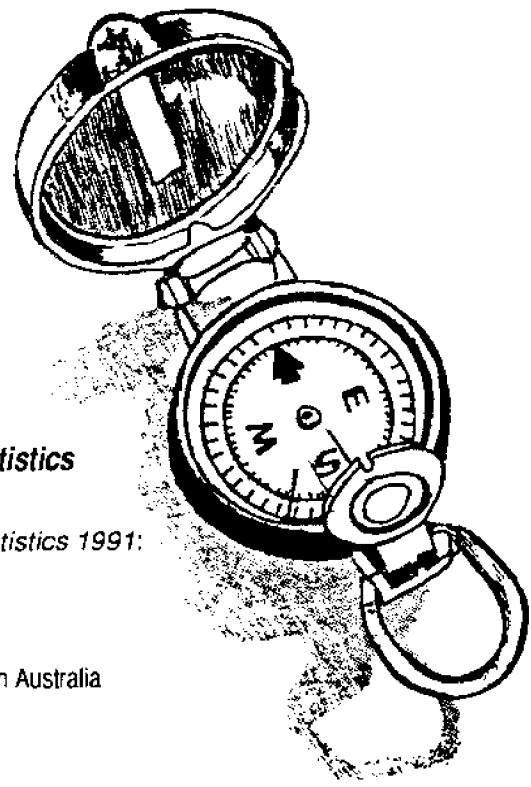
Carrieton (DC)
 Hawker (DC)
 Kanyaka-Quorn (DC)
 Mount Remarkable (DC)
 Port Augusta (C)
 Unincorporated Flinders Ranges

Far North

Cooper Pedy (DC)
 Roxby Downs (M)
 Unincorporated Far North



DIRECTORY OF TOURISM STATISTICS 1991



Suitable for the Experienced Researcher or Occasional User of Tourism Statistics

An essential tool for tourism business decisions, the *Directory of Tourism Statistics 1991*:

- ◆ offers **quick reference** sources of tourism data
- ◆ provides a **comprehensive** listing of public sector statistical data sources available within Australia
- ◆ **provides** appropriate contact details
- ◆ **presents** data to illustrate the uses of the surveys presented
- ◆ **outlines** industry standard definitions and measures of tourism activity, for survey designers.

For Your Copy Mail Or Fax Us Today Or Telephone Direct On (08) 237 7582

ORDER FORM

Return your completed order form to:

**ABS Bookshop
GPO Box 2272
ADELAIDE SA 5001
(08) 237 7566**

or fax a photocopy of this order form to:

I wish to purchase copies of the *Directory of Tourism Statistics, 1991* (Catalogue No. 1130.0) at \$49.50 per copy.

Please find enclosed my cheque or money order for \$.....

(Cheques/money orders should be made payable to *The Collector of Public Moneys*)

OR

Please debit my Bankcard Mastercard Visa for \$.....

Card No. _____ Expiry date ____ / ____ / ____

Name on card _____

Signature _____

POST TO:

Name _____

Organisation _____

Type of business _____

Address _____

Postcode _____ Phone _____



For more information ...

The ABS publishes a wide range of information on Australia's economic and social conditions. A catalogue of publications and products is available from any of our Offices (see below for contact details).

Information Consultancy Service

Special tables or in-depth data investigations are provided by the ABS Information Consultancy Service in each of our Offices (see below for contact details).

Electronic Data Services

A large range of data is available via on-line services, diskette, magnetic tape, tape cartridge and CD ROM. For more details about our electronic data services, contact any ABS Office (see below).

Bookshops and Subscriptions

There are over 400 titles available from the ABS Bookshops in each of our Offices. You can also receive any of our publications on a regular basis. Join our subscription mailing service and have your publications mailed to you in Australia at no additional cost. Telephone our Publications Subscription Service toll free on 008 02 06 08 Australia wide.

Sales and Inquiries

55 Currie Street, Adelaide



SYDNEY (02) 268 4611
MELBOURNE (03) 615 7000
BRISBANE (07) 222 6351
PERTH (09) 360 5140

ADELAIDE (08) 237 7100
HOBART (002) 20 5800
DARWIN (089) 43 2111
CANBERRA (06) 207 0326

NATIONAL OFFICE (CANBERRA) (06) 252 6007



Information Services, ABS, GPO Box 2272, ADELAIDE SA 5001
or any ABS Office.

